



## recomLine TORCH Screening IgG recomLine TORCH Screening IgM

Strip-Immunoassay for the detection of IgG and IgM antibodies against *Toxoplasma gondii*, rubella virus, cytomegalovirus (CMV), and herpes simplex virus type 1 and 2 (HSV-1/2)

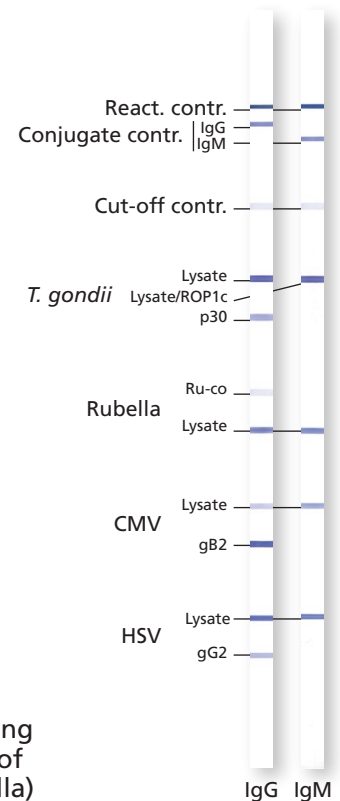
For the determination of the immune status for *Toxoplasma gondii*, rubella virus, CMV, and HSV-1/2, whole cell lysate antigens are used in the IgG and IgM assays.

### recomLine TORCH Screening IgG

The antigens enable differentiated diagnosis in the first step analysis (screening). Interpretation of the *recomLine TORCH Screening IgG* test follows a two-band strategy. The major band (lysate antigen) shows the presence or the absence of specific antibodies to an infectious agent and the ancillary band (e.g. recombinant antigen) is specific for each pathogen and allows further determination (see Table below).

### recomLine TORCH Screening IgM

The diagnostic information presented by the *recomLine TORCH Screening IgG* assay is supported by the *recomLine TORCH Screening IgM* assay. The test strips contain one band per infectious agent (four pathogen-specific lysate antigen bands per test strip), which enables the identification of specific IgM class antibodies to *T. gondii*, rubella virus, CMV, and HSV type 1 and 2, respectively. Sensitivity of the *T. gondii*-specific cell lysate antigen band is enhanced by an early phase antigen ROP1c.



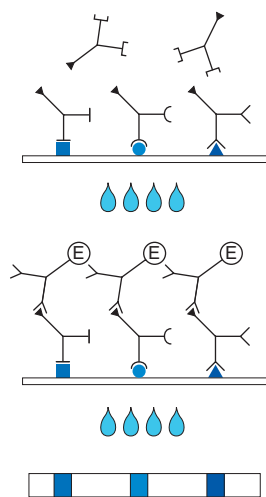
### Product Advantages

- The *recomLine TORCH Screening IgG* and *IgM* is unique on the market allowing screening of 4 pathogens on one stripe as well as determination of the time of infection (CMV, *T. gondii*), protective or non-protective immune status (Rubella) and type differentiation (HSV-2)
- Fast and easy test procedure
- Well defined interpretation of bands and pattern due to easy to read bands
- No automation necessary and especially suitable for small laboratories with low sample throughput
- Easy test procedure; automation possible
- Easy and objective evaluation and documentation by *recomScan* software
- Safe evaluation due to strip specific controls (cut-off and conjugate control)
- Separate detection of IgG and IgM antibodies possible
- Test procedure and reagents identical in all MIKROGEN strip tests - reagents exchangeable
- CE label: The *recomLine TORCH Screening* tests meet the high standard of the EC directive 98/79/EC on in vitro diagnostic medical devices

### Pathogen Specific Antigens used in *recomLine TORCH Screening IgG*

Antigen	Characteristics
<i>Toxoplasma gondii</i> lysate and recombinant antigen p30	Enables exclusion of a primary infection during the last 3 months if a positive reactivity is detectable for lysate and p30
CMV lysate and recombinant antigen gB2	Enables exclusion of a primary infection during the last 6 – 8 weeks if a positive reactivity is detectable for lysate and gB2
Rubella lysate and vaccination band	enables the assessment of protective or non-protective immunity. This band is adjusted according to the guidelines of the World Health Organization (WHO) and it nearly corresponds with an anti-rubella virus IgG antibody titer of $\geq 15$ IU/ml.
HSV-1/2 lysate and recombinant antigen gG2 for HSV-2	allows identification of infections caused by the HSV type 2 (the most common causative agent of genital herpes).

## Test Principle and Procedure



### 1<sup>st</sup> Incubation

A test strip loaded with TORCH antigens is incubated with diluted serum or plasma in a dish for **1 hour**.

wash 3 times

### 2<sup>nd</sup> Incubation

Peroxidase conjugated anti-human antibodies (IgG or IgM specific) are added. Incubate for **45 minutes**.

wash 3 times

### Color reaction

**8 minutes** after addition of the coloring solution, insoluble colored bands develop at the sites on the test strips occupied by antibodies.

## Sample Strips

		Cut-off Contr.																	Interpretation
		Conjugate Contr.		<i>T. gondii</i>		Rubella		CMV		HSV									
		IgG	IgM	lysate p30	lysate	RU-co lysate	lysate	lysate gB2	lysate	lysate	lysate	lysate	lysate	lysate	lysate	lysate	lysate		
1	Rubella seronegative	IgG	IgM																
2		IgG	IgM																
3	Rubella acute infection	IgG	IgM																
4		IgG	IgM																
5	Rubella past infection	IgG	IgM																
6		IgG	IgM																
7	Toxoplasma seronegative	IgG	IgM																
8		IgG	IgM																
9	Toxoplasma acute infection	IgG	IgM																
10		IgG	IgM																
11	Toxoplasma past infection	IgG	IgM																
12		IgG	IgM																
13	CMV seronegative	IgG	IgM																
14		IgG	IgM																
15	CMV acute infection	IgG	IgM																
16		IgG	IgM																
17	CMV past infection	IgG	IgM																
18		IgG	IgM																
19	HSV Type 2 infection	IgG	IgM																
20		IgG	IgM																

## Article-No

6472

**recomLine TORCH Screening IgG**  
Reagents for 20 determinations

6473

**recomLine TORCH Screening IgM**  
Reagents for 20 determinations

## Storage and Shelf Life

At +2°C - +8°C

12 months from the date of production