

## Myoferlin Monoclonal Antibody

### **ORDERING INFORMATION**

**Catalog No.:** 90020 (clone 7D2)

**Format:** 100ug, Protein A-purified, lyophilized, 0.1M Tris, 0.1M glycine, 2% sucrose, 1mg/ml.

### **BACKGROUND**

Ferlin proteins have been implicated in vesicle trafficking in a variety of physiological settings. All mammalian ferlins derive their names based on homology to the *C. elegans* protein FER-1 (FERtilization defective-1). FER1L3 (myoferlin, MYOF), has not yet been directly associated with a distinct mammalian disorder, but recent microarray and proteomic studies in the cancer literature have reported overexpression of MYOF in breast cancer specimens and relevant cell lines. Therefore, MYOF may be an important protein in breast cancer cells for their mobilization during cellular migration and/or invasion.

### **SPECIFICATION SUMMARY**

**Antigen:** Synthetic peptide derived from the N-terminal domain of the human FER1L3 protein. Accession no. Q9NZM1.

**Host species:** Mouse.

**Antibody Class:** IgG2a.

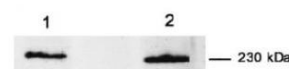
**Preservative:** None.

### **SPECIFICITY**

This antibody recognizes human and mouse FER1L3.

### **APPLICATIONS**

*Immunoblotting:* use at 1-10ug/ml. A band of ~230kDa is detected.



Detection of myoferlin in (1) C2C12 cell lysate and (2) human fibroblast cell lysate with #90020.

*Immunocytochemistry:* use at 1-20ug/ml.

These are recommended concentrations. Enduser should determine optimal concentrations for their applications.

### **RECONSTITUTION**

Reconstitute in distilled water.

### **STORAGE AND STABILITY**

This product is stable for at least one (1) year at -20°C to -70°C. Reconstituted product should be stored in appropriate aliquots to avoid repeated freeze-thaw cycles.

*For in vitro investigational use only. Not for use in therapeutic or diagnostic procedures.*