

recomLine TORCH IgG
recomLine TORCH IgM

Strip-Immunoassay for detection of IgG and IgM antibodies to *Toxoplasma gondii*, Rubella virus, Cytomegalovirus (CMV), and Herpes simplex virus 1 and 2 (HSV-1/2).

recomLine TORCH IgG

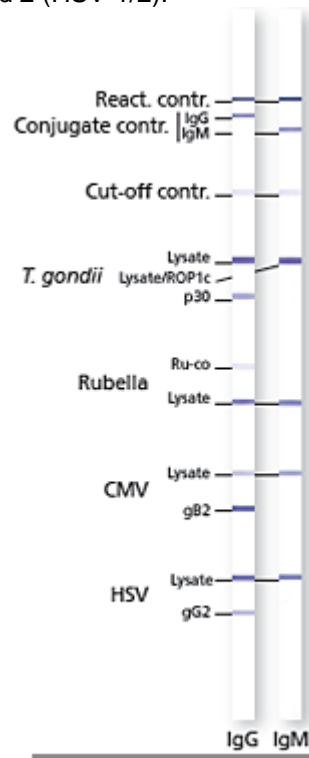
Test strips contain two bands for each target: the major band is lysate antigen, and the ancillary band is recombinant antigen.

recomLine TORCH IgM

Test strips contain one band (lysate antigen) per target.

Product #6472 *recomLine TORCH IgG*
(20 tests per kit)

Product #6473 *recomLine TORCH IgM*
(20 tests per kit)



For more information visit
<http://www.mikrogen.de/english/deutschland/home.html>

*Available in the U.S. For Research Use Only.
Not intended for diagnostic procedures.*