

recomLine Chlamydia IgG
recomLine Chlamydia IgA [IgM]

New antigens
 TARP, CPAF, YwbM

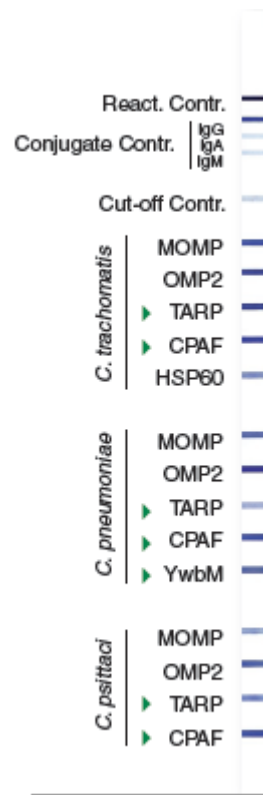
Strip immunoassay with recombinant antigens for detection of IgG, IgA, and IgM antibodies to *Chlamydia trachomatis*, *Chlamydomphila pneumoniae*, and *Chlamydomphila psittaci*.

Chlamydia trachomatis causes sexually transmitted disease with an incidence of approx. 50 million cases per year. In addition to infections of the urogenital tract, the eyes and respiratory tract of newborns can be infected by *Chlamydia trachomatis*.

Chlamydomphila pneumoniae was first identified in 1986; it infects mainly the respiratory tract and causes bronchitis, pneumonia, and sinusitis.

Chlamydomphila psittaci is the causative agent of ornithosis, a rare anthro-poo-zoonosis. It usually infects only individuals who have had contact with companion and farm birds.

recomLine Chlamydia permits detection of antibodies to all three of these organisms in one step and on one strip through the use of multiple recombinant, immunodominant species-specific antigens presented on nitrocellulose strips.



Product #6172 recomLine Chlamydia IgG
 (20 tests per kit)

Product #6173 recomLine Chlamydia IgA [IgM]
 (20 tests per kit)

For more information visit
<http://www.mikrogen.de/english/deutschland/home.html>

Available in the U.S. For Research Use Only.
 Not intended for diagnostic procedures.