

Tau Polyclonal Antibody

ORDERING INFORMATION

Catalog no.: 57010

Format: 100ug (1mg/ml) Protein A-purified antibody in PBS, pH 7.4, 0.09% sodium azide, 50% glycerol.

BACKGROUND

Tau is a subunit protein of one of the major markers of Alzheimer disease (AD), the neurofibrillary tangles. Tau protein has many unusual properties, such as its number of structural conformations and biochemical modifications (phosphorylation, proteolysis, and glycosylation), and its many interaction partners (mainly microtubules, but also other cytoskeletal proteins, kinases, and phosphatases, motor proteins, chaperones, and membrane proteins). The aggregation of Tau is toxic in cell and animal models, but can be reversed by suppressing expression or by aggregation inhibitors.

SPECIFICATION SUMMARY

Antigen: Synthetic peptide derived from the full-length sequence of human Tau.

Accession no.: P10636

Gene ID: 4137

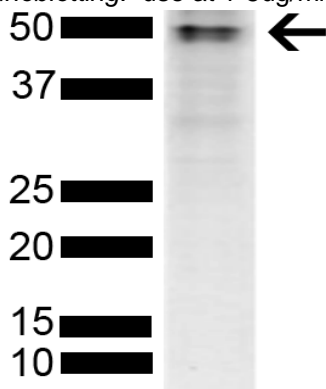
Host Species: Rabbit

Specificity: This antibody recognizes human and mouse Tau.

APPLICATIONS

ELISA: use at 1-10ug/ml with human Tau on the solid phase.

Immunoblotting: use at 1-5ug/ml. A band of ~45.8kDa is detected.



Detection of human Tau in 10ug of lysate of SH-SY5Y cells with #57010 at 1ug/ml.

These are recommended concentrations. Endusers should determine optimal concentrations for their applications.

DILUTION INSTRUCTIONS

Dilute in PBS or medium that is identical to that used in the assay system.

STORAGE AND STABILITY

This product is stable for at least one (1) year at -20°C.

For in vitro investigational use only. Not intended for therapeutic or diagnostic procedures.