

Protein Tyrosine Phosphatase Receptor F (PTPRF) Monoclonal Antibody

ORDERING INFORMATION

Catalog no.: 56579 (clone S165-38)

Format: 100ug (1mg/ml) Protein G-purified antibody in PBS, pH 7.4, 0.1% sodium azide, 50% glycerol.

BACKGROUND

PTPRF, like other members of the protein tyrosine phosphatase (PTP) family, is a signaling molecule that regulates a variety of cellular processes. PTPRF possesses an extracellular region, a single transmembrane region, and two tandem intracytoplasmic catalytic domains, and represents a receptor-type PTP. The extracellular region contains three Ig-like domains and nine non-Ig like domains similar to that of neural-cell adhesion molecule. PTPRF functions in the regulation of epithelial cell-cell contacts at adherents junctions as well as in the control of beta-catenin signaling. An increased expression level of PTPRF has been found in the insulin-responsive tissue of obese, insulin-resistant individuals and may contribute to the pathogenesis of insulin resistance. Two alternatively spliced transcript variants of this gene, which encode distinct proteins, have been reported.

SPECIFICATION SUMMARY

Antigen: Fusion protein corresponding to aa 1315-1607 (cytoplasmic C-terminus) of human PTPRF. This sequence is 97% identical in rat and mouse, 80% identical in PTPRD and PTPRS, and >50% identical in PTPRM and PTPRK.

Accession nos: NP_002831.2, P10586

Gene ID: 5792

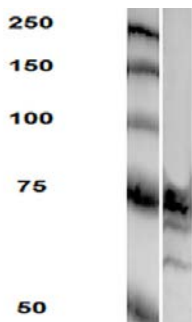
Host Species: Mouse

Antibody Class: IgG2a

Specificity: This antibody recognizes human, mouse, and rat PTPRF.

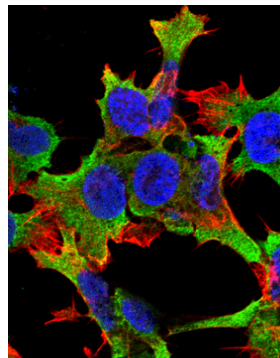
APPLICATIONS

Immunoblotting: use at 1-5ug/ml. A band of ~85kDa is detected which represents the subunit containing transmembrane and intracellular domains.



Detection of PTPRF in rat brain lysate with #56579 at 4ug/ml.

Immunofluorescence: use at 10ug/ml.



Detection of PTPRF in neuroblastoma cell line SK-N-BE with #56579 at 10ug/ml: DAPI (blue) nuclear stain, Texas Red F actin stain, ATTO 488 (green) PTPRF stain.

These are recommended concentrations. Endusers should determine optimal concentrations for their application.

Protein Tyrosine Phosphatase Receptor F (PTPRF) Monoclonal Antibody

DILUTION INSTRUCTIONS

Dilute in PBS or medium that is identical to that used in the assay system.

STORAGE AND STABILITY

This product is stable for at least one (1) year at -20°C.

For in vitro investigational use only. Not intended for therapeutic or diagnostic procedures.