

Beta-Actin Polyclonal Antibody

ORDERING INFORMATION

Catalog No.: 56574

Format: 100ug (1mg/ml) peptide affinity-purified antibody in PBS, pH 7.4, 50% glycerol, 0.09% sodium azide.

BACKGROUND

Actins are essential components of the cytoskeleton with critical roles in a wide range of cellular processes including cell migration, cell division, and the regulation of gene expression. Beta-actin, product of the *Actb* gene, is one of six different actin isoforms and is one of the two nonmuscle cytoplasmic actins (gamma-actin is the other); both are ubiquitously expressed and highly conserved from birds to mammals. Mutations in the *Actb* gene have been associated with diffuse large B-cell lymphoma. Beta-actin (molecular weight ~42kDa) is often used as a loading control in Western blots.

SPECIFICATION SUMMARY

Antigen: Synthetic peptide corresponding to mid-protein amino acids of human beta-actin.

Accession no.: NP_001092.1, P60709

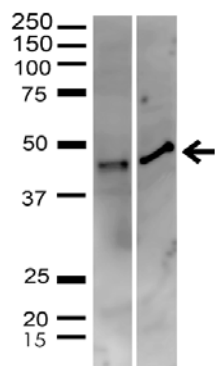
Gene ID: 60

Host Species: Rabbit

Specificity: This antibody recognizes human beta-actin.

APPLICATIONS

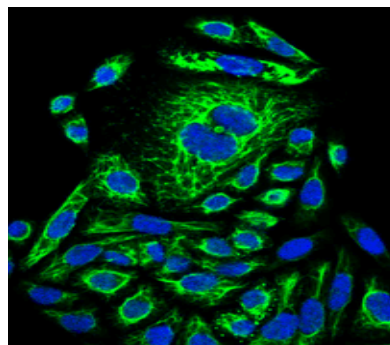
Immunoblotting: use at 1ug/ml.



Detection of beta-actin in HeLa cell lysate (left) and 293T cell lysate (right) with #56574 at 1ug/ml.

These are recommended concentrations; endusers should determine optimal concentrations for their applications.

Immunofluorescence: use at 10ug/ml.



Detection of beta-actin in HeLa cells with #56574 at 10ug/ml. DAPI (blue) nuclear stain and FITC (green) beta-actin stain.

DILUTION INSTRUCTIONS

Dilute in PBS or medium that is identical to that used in the assay system.

STORAGE AND STABILITY

This antibody is stable for at least one (1) year at -20°C.

For in vitro investigational use only. Not intended for diagnostic or therapeutic applications.