

Glucose Transporter 2 (GLUT2) Polyclonal Antibody

ORDERING INFORMATION

Catalog No.: 56573

Format: 100ug (1mg/ml) peptide affinity-purified antibody in PBS, pH 7.4, 50% glycerol, 0.09% sodium azide.

BACKGROUND

GLUT2 is a member of the human glucose transport protein family. It is present in high concentration in the plasma membrane of pancreatic b-cells where it initiates the first step in glucose-stimulated insulin secretion. GLUT2 is required for glucose sensitivity in the hypothalamus and brain stem and is involved in control of food intake and stimulation of glucose uptake by peripheral tissues.

SPECIFICATION SUMMARY

Antigen: Synthetic peptide corresponding to the C-terminus of human GLUT2.

Accession no.: NP_000331.1, P1168

Gene ID: 6514

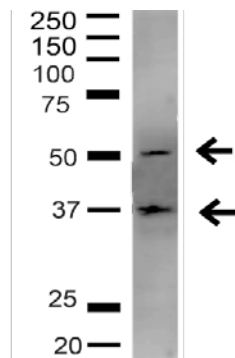
Host Species: Rabbit

Specificity: This antibody recognizes human and rat GLUT2..

APPLICATIONS

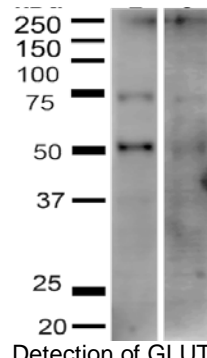
Immunoblotting: use at dilution of 1:1,000.

A bands of 57~kDa is detected. Bands of ~72kDa and ~37kDa may also be detected.



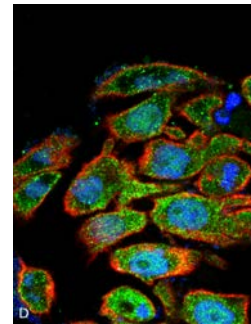
Detection of GLUT2 in rat liver lysate with #56573 diluted 1:1,000.

These are recommended working dilutions. Endusers should determine optimal dilutions for their applications.



Detection of GLUT2 in HeLa cell lysate (left) and human 293T cell lysate (right) with #56573 diluted 1:1,000.

Immunofluorescence: use at dilution of 1:100.



Detection of GLUT2 in human Colon cancer cell line (HT-29) with #56573 diluted 1:100. DAPI (blue) nuclear stain, Texas red actin stain, and FITC (green) BDNF stain.

DILUTION INSTRUCTIONS

Dilute in PBS or medium that is identical to that used in the assay system.

STORAGE AND STABILITY

This antibody is stable for at least one (1) year at -20°C.

For in vitro investigational use only. Not intended for therapeutic or diagnostic applications.