

## Brain-Derived Neurotrophic Factor (BDNF) Polyclonal Antibody

### ORDERING INFORMATION

**Catalog No.:** 56572

**Format:** 100ug (1mg/ml) peptide affinity-purified antibody in PBS, pH 7.4, 50% glycerol, 0.09% sodium azide.

### BACKGROUND

BDNF acts on neurons of the central nervous system and the peripheral nervous system supporting the survival of existing neurons and stimulating growth and differentiation of new neurons and synapses. In the brain, it is active in the hippocampus, cortex, and basal forebrain, areas vital to learning, memory, and higher thinking. It is also expressed in the retina, motor neurons, kidneys, saliva, and prostate.

### SPECIFICATION SUMMARY

**Antigen:** Synthetic peptide corresponding to the N-terminus of human BDNF.

**Accession no.:** NP\_001137277, P23560

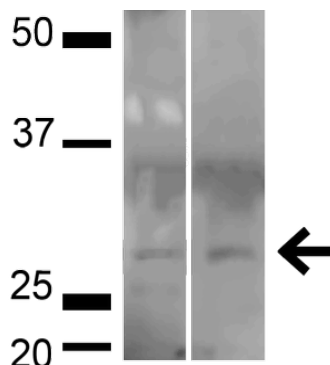
**Gene ID:** 627

**Host Species:** Rabbit

**Specificity:** This antibody recognizes human and mouse BDNF.

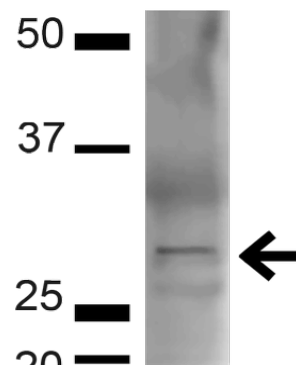
### APPLICATIONS

**Immunoblotting:** use at dilution of 1:1,000. A band of ~27-28kDa is detected.



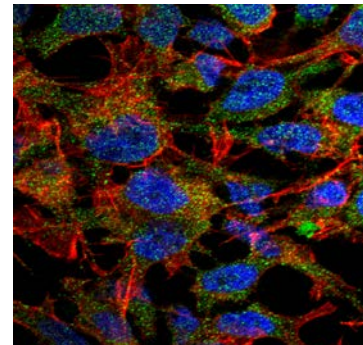
Detection of BDNF in HeLa cell lysate (left) and human 293T cell lysate (right) with #56572 diluted 1:1,000.

These are recommended working dilutions. Endusers should determine optimal dilutions for their applications.



Detection of BDNF in mouse brain lysate with #56572 diluted 1:1,000.

**Immunofluorescence:** use at dilution of 1:100.



Detection of BDNF in human neuroblastoma cell line SK-N-BE with #56572 diluted 1:100. DAPI (blue) nuclear stain, Texas red actin stain, and FITC (green) BDNF stain.

### DILUTION INSTRUCTIONS

Dilute in PBS or medium that is identical to that used in the assay system.

## Brain-Derived Neurotrophic Factor (BDNF) Polyclonal Antibody

### STORAGE AND STABILITY

This antibody is stable for at least one (1) year at -20°C.

*For in vitro investigational use only. Not intended for therapeutic or diagnostic applications.*