

## Choline Acetyltransferase Polyclonal Antibody

### ORDERING INFORMATION

**Catalog No.:** 56571

**Format:** 100ug (1mg/ml) peptide affinity-purified antibody in PBS, pH 7.4, 50% glycerol, 0.09% sodium azide.

### BACKGROUND

Choline acetyltransferase (ChAT) catalyzes the transfer of an acetyl group from acetyl-CoA to choline to produce acetylcholine. ChAT is found in high concentration in the central nervous system and peripheral nervous system. Alterations in concentrations of acetylcholine and ChAT have been associated with Alzheimer disease and Amyotrophic Lateral Sclerosis (ALS).

### SPECIFICATION SUMMARY

**Antigen:** Synthetic peptide corresponding to amino acids from the N-terminus to the mid-protein of human choline o-acetyltransferase.

**Accession no.:** NP\_001136401.1, P28329

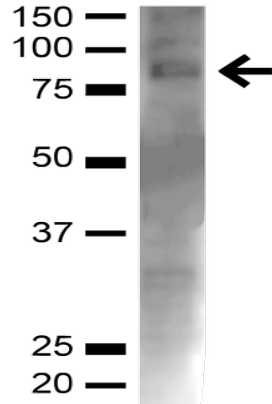
**Gene ID:** 1103

**Host Species:** Rabbit

**Specificity:** This antibody recognizes human and mouse choline acetyltransferase.

### APPLICATIONS

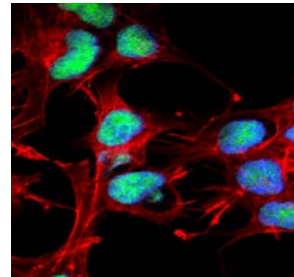
**Immunoblotting:** use at dilution of 1:1,000. A band of ~80kDa is detected.



Detection of choline acetyltransferase in mouse brain lysate with #56571 diluted 1:1,000.

These are recommended working dilutions. Endusers should determine optimal dilutions for their applications.

**Immunofluorescence:** use at dilution of 1:100.



Detection of choline acetyltransferase in human neuroblastoma cell line SK-N-BE with #56571 diluted 1:100. DAPI (blue) nuclear stain, Texas red actin stain, and FITC (green) choline acetyltransferase stain.

### DILUTION INSTRUCTIONS

Dilute in PBS or medium that is identical to that used in the assay system.

### STORAGE AND STABILITY

This antibody is stable for at least one (1) year at -20°C.

*For in vitro investigational use only. Not intended for therapeutic or diagnostic applications.*