

GABARAPL1 (GABA-A Receptor Associated Protein-Like 1) Polyclonal Antibody

ORDERING INFORMATION

Catalog No.: 56570

Format: 100ug (1mg/ml) peptide affinity-purified antibody in PBS, pH 7.4, 50% glycerol, 0.09% sodium azide.

BACKGROUND

GABARAP, *GABARAPL1* and *GABARAPL2* genes are differentially expressed in normal and pathological tissues. The *GABARAP* gene is highly expressed in endocrine tissues while the *GABARAPL1* gene is predominantly expressed in the central nervous system, but they both are underexpressed in a large variety of cancer cell lines. However, the analysis of *GABARAPL1* expression in a cohort of 256 breast adenocarcinoma revealed that a low *GABARAPL1* expression was correlated with a high risk of metastasis, in particular for lymph node-positive patients.

SPECIFICATION SUMMARY

Antigen: Synthetic peptide corresponding to the C-terminus of human GABARAPL1

Accession no.: NP_113600, Q9H0R8

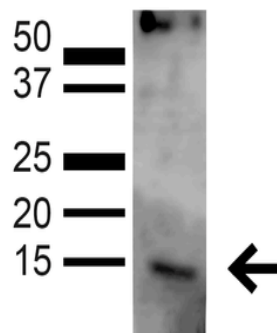
Gene ID: 23710

Host Species: Rabbit

Specificity: This antibody recognizes human GABARAPL1.

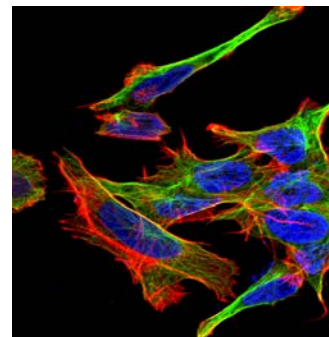
APPLICATIONS

Immunoblotting: use at dilution of 1:1,000. A band of ~14-16kDa is detected.



Detection of GABARAPL1 in HeLa cell lysate with #56570 diluted 1:1,000.

Immunofluorescence: use at dilution of 1:100.



Detection of GABARAPL1 in formalin-fixed human neuroblastoma cell line SK-N-BE with #56570 diluted 1:100. DAPI (blue) nuclear stain, Texas red actin stain, and FITC (green) GABARAPL1 stain.

These are recommended working dilutions. Endusers should determine optimal dilutions for their applications.

GABARAP (GABA-A Receptor Associated Protein) Polyclonal Antibody

DILUTION INSTRUCTIONS

Dilute in PBS or medium that is identical to that used in the assay system.

STORAGE AND STABILITY

This antibody is stable for at least one (1) year at -20°C.

For in vitro investigational use only. Not intended for therapeutic or diagnostic applications.