

GABARAP (GABA-A Receptor Associated Protein) Polyclonal Antibody

ORDERING INFORMATION

Catalog No.: 56569

Format: 100ug (1mg/ml) peptide affinity-purified antibody in PBS, pH 7.4, 50% glycerol, 0.09% sodium azide.

BACKGROUND

Gamma-aminobutyric acid A receptors (GABA(A) receptors) are ligand-gated chloride channels that mediate inhibitory neurotransmission. This protein clusters neurotransmitter receptors by mediating interaction with the cytoskeleton. In addition, GABARAP has an important role in autophagy; it is crucial for autophagosome formation and sequestering cytosolic cargo into double-membrane vesicles which is then followed by degradation after fusion with lysosomes.

SPECIFICATION SUMMARY

Antigen: Synthetic peptide corresponding to the C-terminus of human GABARAP

Accession no.: NP_009209.1, O95166

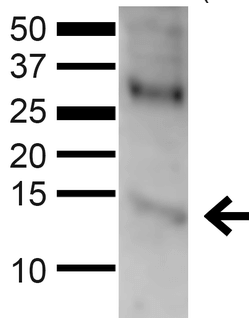
Gene ID: 11337

Host Species: Rabbit

Specificity: This antibody recognizes human and mouse GABARAP.

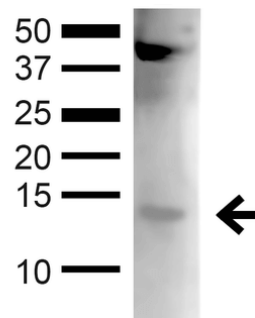
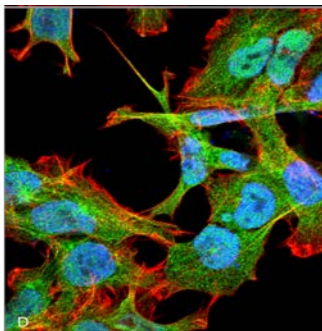
APPLICATIONS

Immunoblotting: use at dilution of 1:1,000. A band of ~14-16kDa is detected. Other bands observed at ~40kDa (complex) and ~26kDa (dimer).



Detection of GABARAP in human 293T cells with #56569 diluted 1:1,000.

Immunofluorescence: use at dilution of 1:100.



Detection of GABARAP in mouse kidney lysate with #56569 diluted 1:1,000.

Detection of GABARAP in formalin-fixed human neuroblastoma cell line SK-N-BE with #56569 diluted 1:100. DAPI (blue) nuclear stain, Texas red actin stain, and FITC (green) GABARAP stain.

GABARAP (GABA-A Receptor Associated Protein) Polyclonal Antibody

These are recommended working dilutions. Endusers should determine optimal dilutions for their applications.

DILUTION INSTRUCTIONS

Dilute in PBS or medium that is identical to that used in the assay system.

STORAGE AND STABILITY

This antibody is stable for at least one (1) year at -20°C.

For in vitro investigational use only. Not intended for therapeutic or diagnostic applications.