

Laforin Monoclonal Antibody

ORDERING INFORMATION

Catalog no.: 56567 (clone S84-37)

Format: 100ug (1mg/ml) Protein G-purified antibody in PBS, pH 7.4, 0.1% sodium azide, 50% glycerol.

BACKGROUND

Laforin (also known as Lafora PTPase) is a dual specificity protein phosphatase. In glycogen metabolism, it prevents formation of poorly branched glycogen molecules (polyglucosans). Laforin complexes with NHLRC1/malin and Hsp70 and suppresses cellular toxicity of misfolded proteins by promoting their degradation through the ubiquitin-proteasome system. Laforin is expressed in heart, skeletal muscle, kidney, pancreas, and brain. Defective Laforin is associated with progressive myoclonic epilepsy type 2.

SPECIFICATION SUMMARY

Antigen: Fusion protein corresponding to aa 1-331 (full-length) of human Laforin. This sequence is 90% identical to rat and 89% identical to mouse.

Accession nos.: NP_001018051.1, O095278

Gene ID: 7957

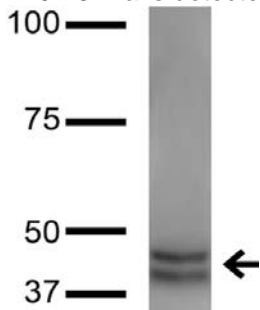
Host Species: Mouse

Antibody Class: IgG1

Specificity: This antibody recognizes human Laforin.

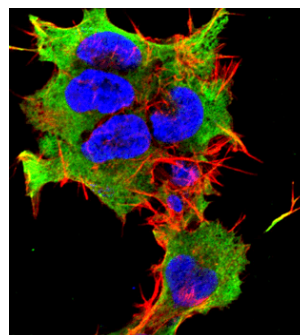
APPLICATIONS

Immunoblotting: use at 1-5ug/ml. A band of ~40-45kDa is detected.



Detection of Laforin in human hippocampus lysate with #56567 at 1ug/ml.

Immunofluorescence: use at 10ug/ml.



Detection of Laforin in neuroblastoma cell line SK-N-BE with #56567 at 10ug/ml: DAPI (blue) nuclear stain, Texas Red F actin stain, ATTO 488 (green) Laforin stain.

These are recommended concentrations. Endusers should determine optimal concentrations for their application.

DILUTION INSTRUCTIONS

Dilute in PBS or medium that is identical to that used in the assay system.

STORAGE AND STABILITY

This product is stable for at least one (1) year at -20°C.

For in vitro investigational use only. Not intended for therapeutic or diagnostic procedures.