

INPP5F Monoclonal Antibody

ORDERING INFORMATION

Catalog no.: 56565 (clone S166A-26)

Format: 100ug (1mg/ml) Protein G-purified antibody in PBS, pH 7.4, 0.1% sodium azide, 50% glycerol.

BACKGROUND

INPP5F (also known as ORCL, inositol polyphosphate 5-phosphatase, and Lowe oculocerebrorenal syndrome protein) is a phosphatase that converts (1) phosphatidylinositol 4,5-bisphosphate to phosphatidylinositol 4-phosphate, (2) inositol 1,4,5-trisphosphate to inositol 1,4-bisphosphate, and (3) inositol 1,3,4,5-tetrakisphosphate to inositol 1,3,4-trisphosphate. INPP5F is involved in primary cilia assembly and may also have a role in lysosomal membrane trafficking. INPP5F is expressed in brain, skeletal muscle, heart, kidney, lung, placenta, fibroblasts, retina and the retinal pigment epithelium. Defects in the *INPP5F* gene can lead to Lowe oculocerebrorenal syndrome and Dent disease type 2 (DD2).

SPECIFICATION SUMMARY

Antigen: Fusion protein corresponding to aa 1-901 (full-length) of human INPP5F. This sequence is 93% identical to rat, 91% identical to mouse, and ~50% identical to INPP5b.

Accession nos.: NP_000267.2, Q01968

Gene ID: 4952

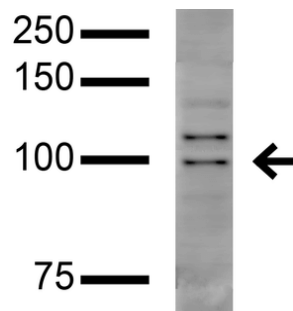
Host Species: Mouse

Antibody Class: IgG1

Specificity: This antibody recognizes human, mouse and rat INPP5F as well as INPP5b.

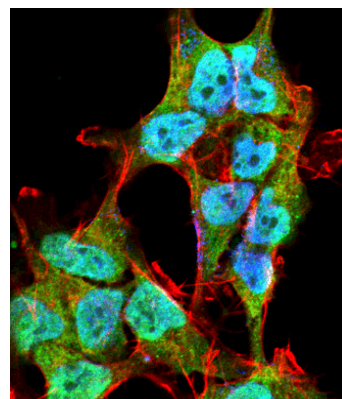
APPLICATIONS

Immunoblotting: use at 1-5ug/ml. A band of ~100kDa is detected.



Detection of INPP5F in COS cells transfected with GFP-tagged INPP5F with #56565 at 5ug/ml.

Immunofluorescence: use at 10ug/ml



Detection of INPP5F in neuroblastoma cell line SK-N-BE with #56565 at 10ug/ml: DAPI (blue) nuclear stain, Texas Red F actin stain, and ATTO 488 (green) INPP5F stain.

These are recommended concentrations. Enduser should determine optimal concentrations for their application.

INPP5F Monoclonal Antibody

DILUTION INSTRUCTIONS

Dilute in PBS or medium that is identical to that used in the assay system.

STORAGE AND STABILITY

This product is stable for at least one (1) year at -20°C.

For in vitro investigational use only. Not intended for therapeutic or diagnostic procedures.