

## LRRK2 / Dardarin Monoclonal Antibody

### ORDERING INFORMATION

**Catalog no.:** 56563 (clone S138-6)

**Format:** 100ug (1mg/ml) Protein G-purified antibody in PBS, pH 7.4, 0.1% sodium azide, 50% glycerol.

### BACKGROUND

LRRK2 is a large protein (>200kDa) with multiple domains including several ankyrin, leucine-rich, and WD40 repeats, a Raslike small GTPase family domain named Roc, and a kinase domain that is closely related to the RIP kinase domain. The *LRRK2* gene is expressed in brain as well as in other tissues such as lung, liver and heart. LRRK2 might be central to the pathogenesis of several major neurodegenerative diseases associated with parkinsonism. LRRK2 is also known as Leucine-rich repeat serine/threonine-protein kinase 2, Dardarin, and PARK8.

### SPECIFICATION SUMMARY

**Antigen:** Fusion protein corresponding to aa 1-500 (N-terminus) of human LRRK2. This sequence is 83% identical in mouse and rat and has no significant identity to LRRK1.

**Accession nos.:** NP\_940980, Q5S007

**Gene ID:** 120892

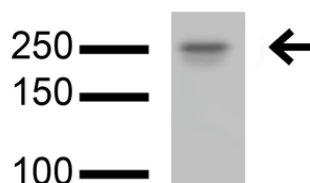
**Host Species:** Mouse

**Antibody Class:** IgG1

**Specificity:** This antibody recognizes human, mouse and rat LRRK2.

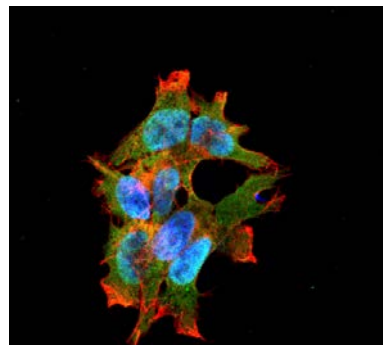
### APPLICATIONS

**Immunoblotting:** use at 1-5ug/ml. A band of >200kDa is detected.



Detection of LRRK2 in rat brain lysate with #56563 at 5ug/ml.

**Immunofluorescence:** use at 10ug/ml.



Detection of LRRK2 in neuroblastoma cell line SK-N-BE with #56563 at 10ug/ml: DAPI (blue) nuclear stain, Texas Red F actin stain, ATTO 488 (green) LRRK2 stain.

These are recommended concentrations. Endusers should determine optimal concentrations for their application.

### DILUTION INSTRUCTIONS

Dilute in PBS or medium that is identical to that used in the assay system.

## LRRK2 / Dardarin Monoclonal Antibody

### STORAGE AND STABILITY

This product is stable for at least one (1) year at -20°C.

*For in vitro investigational use only. Not intended for therapeutic or diagnostic procedures.*