

## Protocadherin Gamma B2 Monoclonal Antibody

### ORDERING INFORMATION

**Catalog no.:** 56561 (clone S148-30)

**Format:** 100ug (1mg/ml) Protein G-purified antibody in PBS, pH 7.4, 0.1% sodium azide, 50% glycerol.

### BACKGROUND

The protocadherin gamma gene cluster is one of three related clusters tandemly linked on chromosome five. The gamma gene cluster includes 22 genes divided into 3 subfamilies: subfamily A contains 12 genes, subfamily B contains 7 genes and 2 pseudogenes, and subfamily C contains 3 genes. The tandem array of 22 large, variable region exons are followed by a constant region containing 3 exons shared by all genes in the cluster. Each variable region exon encodes the extracellular region (which includes 6 cadherin ectodomains and a trans-membrane region). The constant region exons encode the common cytoplasmic region. These neural cadherin-like cell adhesion proteins are believed to play a critical role in the establishment and function of specific cell-cell connections in the brain.

### SPECIFICATION SUMMARY

**Antigen:** Fusion protein corresponding to aa 719-804 (variable cytoplasmic domain) of mouse PCDHGB2. This sequence is 68% identical to human and >60% identical with other PCDHGB proteins.

**Accession nos.:** NP\_291053.1, Q91XX7

**Gene ID:** 93700

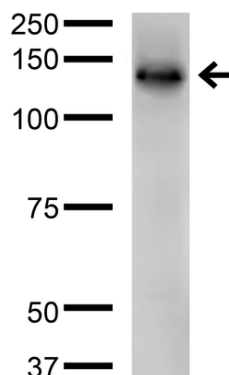
**Host Species:** Mouse

**Antibody Class:** IgG1

**Specificity:** This antibody recognizes human and mouse PCDHGB2 protein. It does not cross-react with other Protocadherin Gamma A, B, or C proteins.

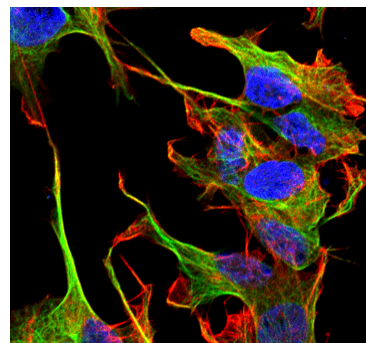
### APPLICATIONS

**Immunoblotting:** use at 1-5ug/ml. A band of ~100kDa is detected.



Detection of PCDHGB2 in COS cells transfected with GFP-tagged PCDHGB2 with #56561 at 5ug/ml.

**Immunofluorescence:** use at 10ug/ml.



Detection of PCDHGB2 in neuroblastoma cell line SK-N-BE with #56561 at 10ug/ml: DAPI (blue) nuclear stain, Texas Red F actin stain, ATTO 488 (green) PCDHGB2 stain.

These are recommended concentrations. Endusers should determine optimal concentrations for their application.

## Protocadherin Gamma B2 Monoclonal Antibody

### DILUTION INSTRUCTIONS

Dilute in PBS or medium that is identical to that used in the assay system.

### STORAGE AND STABILITY

This product is stable for at least one (1) year at -20°C.

*For in vitro investigational use only. Not intended for therapeutic or diagnostic procedures.*