

Protocadherin Gamma A (pan) Monoclonal Antibody

ORDERING INFORMATION

Catalog no.: 56560 (clone S144-32)

Format: 100ug (1mg/ml) Protein G-purified antibody in PBS, pH 7.4, 0.1% sodium azide, 50% glycerol.

BACKGROUND

The protocadherin gamma gene cluster is one of three related clusters tandemly linked on chromosome five. The gamma gene cluster includes 22 genes divided into 3 subfamilies: subfamily A contains 12 genes, subfamily B contains 7 genes and 2 pseudogenes, and subfamily C contains 3 genes. The tandem array of 22 large, variable region exons are followed by a constant region containing 3 exons shared by all genes in the cluster. Each variable region exon encodes the extracellular region (which includes 6 cadherin ectodomains and a trans-membrane region). The constant region exons encode the common cytoplasmic region. These neural cadherin-like cell adhesion proteins are believed to play a critical role in the establishment and function of specific cell-cell connections in the brain.

SPECIFICATION SUMMARY

Antigen: Fusion protein corresponding to aa 720-804 (variable cytoplasmic domain) of mouse PCDHGA3. This sequence is 80% identical to human and >75% identical to other Protocadherin Gamma A proteins.

Accession nos.: NP_291064.1, Q91XY5

Gene ID: 93711

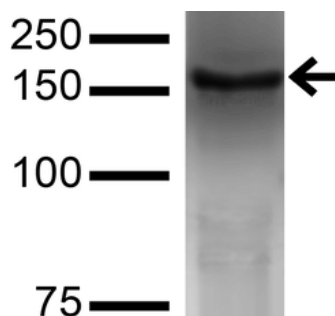
Host Species: Mouse

Antibody Class: IgG2b

Specificity: This antibody recognizes human, mouse, and rat PCDHGA proteins. It does not cross-react with Protocadherin Gamma B or C proteins.

APPLICATIONS

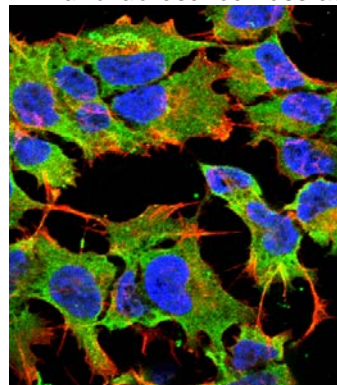
Immunoblotting: use at 1-5ug/ml. A band of ~100kDa is detected.



Detection of PCDHGA in COS cells transfected with GFP-tagged PCDHGA3 with #56560 at 5ug/ml.

These are recommended concentrations. Endusers should determine optimal concentrations for their application.

Immunofluorescence: use at 10ug/ml.



Detection of PCDHGA in neuroblastoma cell line SK-N-BE with #56560 at 10ug/ml: DAPI (blue) nuclear stain, Texas Red F actin stain, ATTO 488 (green) PCDHGA stain.

Protocadherin Gamma A (pan) Monoclonal Antibody

DILUTION INSTRUCTIONS

Dilute in PBS or medium that is identical to that used in the assay system.

STORAGE AND STABILITY

This product is stable for at least one (1) year at -20°C.

For in vitro investigational use only. Not intended for therapeutic or diagnostic procedures.