

## Protocadherin Gamma A3 Monoclonal Antibody

### ORDERING INFORMATION

**Catalog no.:** 56559 (clone S144-17)

**Format:** 100ug (1mg/ml) Protein G-purified antibody in PBS, pH 7.4, 0.1% sodium azide, 50% glycerol.

### BACKGROUND

Protocadherins are a large family of cadherin-like cell adhesion proteins that are involved in the establishment and maintenance of neuronal connections. There are three protocadherin (PCDH) gene clusters designated alpha, beta and gamma, all of which contain multiple tandemly arranged genes. Protocadherin gamma-A3 (PCDHGA3) is a 932 amino acid protein encoded by the protocadherin gamma cluster, subfamily A. It is a type I trans-membrane receptor containing six cadherin motifs and is expressed in the central nervous system where it localizes to synapses. Two isoforms of PCDHGA3 are produced as a result of alternative splicing events.

### SPECIFICATION SUMMARY

**Antigen:** Fusion protein corresponding to aa 720-804 (variable cytoplasmic domain) of mouse PCDHGA3. This sequence is 80% identical to human and >75% identical to other Gamma-protocadherin-A proteins.

**Accession nos.:** NP\_291064.1, Q91XY5

**Gene ID:** 93711

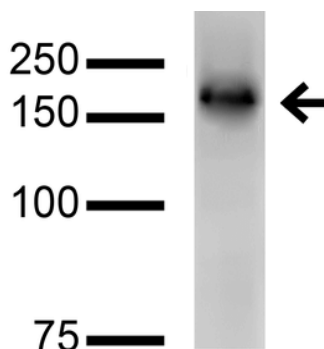
**Host Species:** Mouse

**Antibody Class:** IgG1

**Specificity:** This antibody recognizes human and mouse PCDHGA3. It does not cross-react with other Protocadherin gamma A, B, or C proteins.

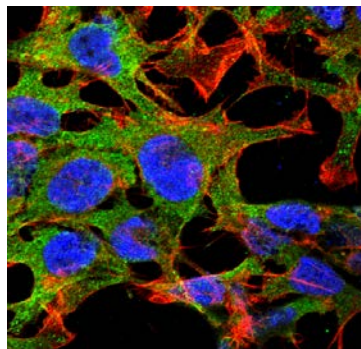
### APPLICATIONS

**Immunoblotting:** use at 1-5ug/ml. A band of ~100kDa is detected.



Detection of PCDHGA3 in COS cells transfected with GFP-tagged PCDHGA3 with #56559 at 5ug/ml.

**Immunofluorescence:** use at 10ug/ml.



Detection of PCDHGA3 in neuroblastoma cell line SK-N-BE with #56559 at 10ug/ml: DAPI (blue) nuclear stain, Texas Red F actin stain, ATTO 488 (green) PCDHGA3 stain.

These are recommended concentrations. Endusers should determine optimal concentrations for their application.

## Protocadherin Gamma A3 Monoclonal Antibody

### DILUTION INSTRUCTIONS

Dilute in PBS or medium that is identical to that used in the assay system.

### STORAGE AND STABILITY

This product is stable for at least one (1) year at -20°C.

*For in vitro investigational use only. Not intended for therapeutic or diagnostic procedures.*