

GRK (pan) Monoclonal Antibody

ORDERING INFORMATION

Catalog no.: 56558 (clone S145-20)

Format: 100ug (1mg/ml) Protein G-purified antibody in PBS, pH 7.4, 0.1% sodium azide, 50% glycerol.

BACKGROUND

G protein-coupled receptor kinases (GRK) are serine/threonine kinases that phosphorylate a variety of activated G-protein-coupled receptors (GPCRs) including adrenergic receptors, muscarinic acetylcholine receptors, dopamine receptors, and opioid receptors. GRK receptor phosphorylation initiates beta-arrestin-mediated receptor desensitization, internalization, and signaling events leading to their down-regulation.

SPECIFICATION SUMMARY

Antigen: Fusion protein corresponding to aa 381-590 (C-terminus) of mouse GRK5. This sequence is 91% identical to human, 99% identical to rat, >55% identical to GRK6 and GRK4, and >40% identical to GRK7 and RK.

Accession nos.: NP_061357.3, Q8VEB1

Gene Id: 14773

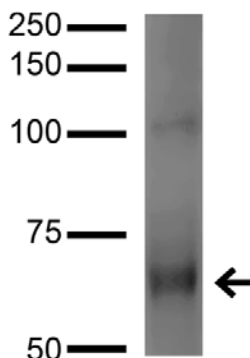
Host Species: Mouse

Antibody Class: IgG1

Specificity: This antibody recognizes human, mouse and rat GRK5. It cross-reacts with GRK6.

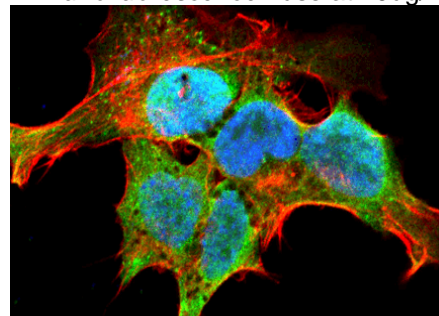
APPLICATIONS

Immunoblotting: use at 1-5ug/ml. A band of ~65kDa is detected.



Detection of GRK6A/B in COS cells transfected with GRK6 with #56558 at 5ug/ml.

Immunofluorescence: use at 10ug/ml.



Detection of GRK in neuroblastoma cell line SK-N-BE with #56558 at 10ug/ml: DAPI (blue) nuclear stain, Texas Red F actin stain, ATTO 488 (green) GRK stain.

These are recommended concentrations. Endusers should determine optimal concentrations for their application.

DILUTION INSTRUCTIONS

Dilute in PBS or medium that is identical to that used in the assay system.

STORAGE AND STABILITY

This product is stable for at least one (1) year at -20°C.

For in vitro investigational use only. Not intended for therapeutic or diagnostic procedures.