

JIP-2/IB-2 Monoclonal Antibody

ORDERING INFORMATION

Catalog no.: 56556 (clone S135-37)

Format: 100ug (1mg/ml) Protein G-purified antibody in PBS, pH 7.4, 0.1% sodium azide, 50% glycerol.

BACKGROUND

The JNK-interacting protein (JIP) group of scaffold proteins selectively mediates JNK signaling by aggregating specific components of the MAPK cascade to form a functional JNK signaling module. JIP2 inhibits IL1 beta-induced apoptosis in insulin-secreting cells and may function as a regulator of vesicle transport through interactions with the JNK-signaling components and motor proteins. It is expressed mainly in the cerebellum, pituitary gland, occipital lobe, and the amygdala of the brain, but also in the pancreas, including in insulin-secreting cells.

SPECIFICATION SUMMARY

Antigen: Fusion protein corresponding to aa 226-421 of mouse JIP-2/IB-2. This sequence is 94% identical to rat, 86% identical to human, and >50% identical to JIP-1.

Accession nos.: NP_068740.3, Q9ERE9

Gene Id: 60597

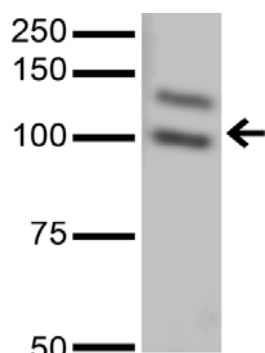
Host Species: Mouse

Antibody Class: IgG1

Specificity: This antibody recognizes human, mouse, and rat JIP-2/IB-2. It does not cross-react with JIP-1/IB-1

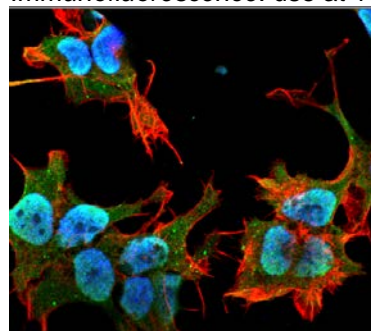
APPLICATIONS

Immunoblotting: use at 1-5ug/ml. A band of ~100kDa is detected.



Detection of JIP-2/IB-2 in COS cells transfected with Flag-tagged JIP-1 with #56556 at 5ug/ml.

Immunofluorescence: use at 10ug/ml.



Detection of JIP2/IB2 in neuroblastoma cell line SK-N-BE with #56556 at 10ug/ml: DAPI (blue) nuclear stain, Texas Red F actin stain, ATTO 488 (green) JIP2/IB2 stain.

These are recommended concentrations. Endusers should determine optimal concentrations for their application.

DILUTION INSTRUCTIONS

Dilute in PBS or medium that is identical to that used in the assay system.

JIP-2/IB-2 Monoclonal Antibody

STORAGE AND STABILITY

This product is stable for at least one (1) year at -20°C.

For in vitro investigational use only. Not intended for therapeutic or diagnostic procedures.