

Ataxin-1 Monoclonal Antibody

ORDERING INFORMATION

Catalog no.: 56549 (clone S65-37)

Format: 100ug (1mg/ml) Protein G-purified antibody in PBS, pH 7.4, 0.1% sodium azide, 50% glycerol.

BACKGROUND

Ataxin-1 is a member of the ATXN1 protein family. It is a neurodegenerative disorder protein that is believed to play a role in metabolism of RNA. A mutation of Ataxin-1 causes spinocerebellar ataxia type-1 (SCA1), a progressive neurodegenerative disease that primarily affects Purkinje cells in the brain stem and cerebellum. Ataxin-1 is ubiquitously expressed except in brain where it is limited to populations of neurons.

SPECIFICATION SUMMARY

Antigen: Synthetic peptide corresponding to aa 746-761 (RKRRRWSAPETRKLEK) of mouse ataxin-1. This sequence is 93% identical to rat and 87% identical to human Ataxin-1.

Accession no.: NP_0011861233.1, P54254

Gene ID: 20238

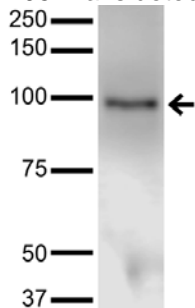
Host Species: Mouse

Antibody Class: IgG1

Specificity: This antibody recognizes human, mouse, and rat Ataxin-1.

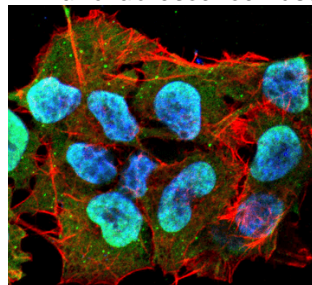
APPLICATIONS

Immunoblotting: use at 1-5ug/ml. A band of ~95kDa is detected; predicted mw ~85kDa.



Detection of Ataxin-1 in COS-1 cells transfected with Ataxin-1 with #56549 at 5ug/ml.

Immunofluorescence: use at 10ug/ml.



Detection of Ataxin-1 in neuroblastoma cell line SK-N-BE with #56549 at 10ug/ml: DAPI (blue) nuclear stain, Texas Red F actin stain, FITC (green) Ataxin-1 stain.

These are recommended concentrations. Endusers should determine optimal concentrations for their applications.

DILUTION INSTRUCTIONS

Dilute in PBS or medium that is identical to that used in the assay system.

STORAGE AND STABILITY

This product is stable for at least one (1) year at -20°C.

For in vitro investigational use only. Not intended for therapeutic or diagnostic applications.