

PINK1 Monoclonal Antibody

ORDERING INFORMATION

Catalog no.: 56548 (clone S4-15)

Format: 100ug (1mg/ml) Protein G-purified antibody in PBS, pH 7.4, 0.1% sodium azide, 50% glycerol.

BACKGROUND

PINK1 (PTEN-induced putative kinase 1) is a mitochondrial serine/threonine kinase that maintains mitochondrial function and integrity, provides protection against mitochondrial dysfunction during cellular stress, and is involved in the clearance of damaged mitochondria via selective autophagy. PINK1 is synthesized as a 63kDa protein which undergoes proteolytic processing to yield two cleaved forms, ~55kDa and ~42kDa. PINK1 may be localized to the outer mitochondrial membrane with its kinase domain facing the cytosol which would explain the observed physical interaction between PINK1 and cytosolic E3 ubiquitin ligase Parkin.

SPECIFICATION SUMMARY

Antigen: Fusion protein corresponding to aa 112-496 (cytoplasmic C-terminus) of human PINK1. This sequence is 82% identical to rat PINK1 and 81% identical to mouse PINK1.

Accession no.: NP_115785.1, Q9BXM7

Gene ID: 65018

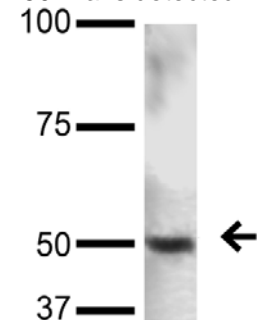
Host Species: Mouse

Antibody Class: IgG1

Specificity: This antibody recognizes human, mouse, and rat PINK1.

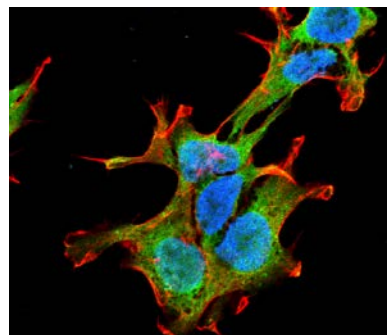
APPLICATIONS

Immunoblotting: use at 1-5ug/ml. A band of ~50kDa is detected.



Detection of PINK1 in 15ug rat brain lysate with #56548 at 5ug/ml.

Immunofluorescence: use at 10ug/ml.



Detection of PINK1 in neuroblastoma cell line SK-N-BE with #56548 at 10ug/ml: DAPI (blue) nuclear stain, Texas RedF actin stain, FITC (green) PINK1 stain.

These are recommended concentrations. Enduser should determine optimal concentrations for their application.

DILUTION INSTRUCTIONS

Dilute in PBS or medium that is identical to that used in the assay system.

PINK1 Monoclonal Antibody

STORAGE AND STABILITY

This product is stable for at least one (1) year at -20°C.

For in vitro investigational use only. Not intended for therapeutic or diagnostic procedures.