

mGluR1/5 Glutamate Receptor Monoclonal Antibody

ORDERING INFORMATION

Catalog No.: 56545 (clone S75-3)
Size: 100ug in PBS, pH 7.4; 50% glycerol, 0.09% sodium azide. Purified by Protein G affinity chromatography.

BACKGROUND

The metabotropic glutamate receptors (mGluRs) are active through an indirect metabotropic process. They are members of the group C family of G-protein-coupled receptors, or GPCRs. Like all glutamate receptors, mGluRs bind glutamate which functions as an excitatory neurotransmitter. Metabotropic glutamate receptors are not ion channels. Instead, they activate biochemical cascades, leading to the modification of other proteins. This can lead to changes in the synapse's excitability. Eight different types of mGluRs, designated mGluR₁ to mGluR₈, are divided into groups I, II, and III. Receptor types are grouped based on receptor structure and physiological activity.

SPECIFICATION SUMMARY

Antigen: Fusion protein corresponding to aa 824-1203 (cytoplasmic C-terminus) of rat mGluR5b (accession no. P31424).

Host Species: Mouse

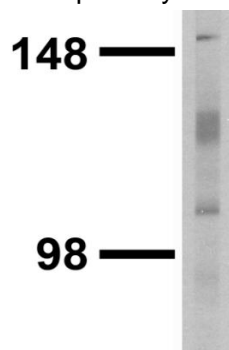
Antibody Class: IgG2a

SPECIFICITY

This antibody recognizes human, mouse, and rat mGluR1 and mGluR5.

APPLICATIONS

Immunoblotting: use at 1ug/ml. A band of ~130kDa is detected. Smaller fragments due to proteolysis are detected as well.



Positive control: Rat brain lysate. These are recommended concentrations. User should determine optimal concentrations for their application.

DILUTION INSTRUCTIONS

Dilute in PBS or medium which is identical to that used in the assay system.

STORAGE AND STABILITY

This antibody is stable for at least one (1) year at -20°C. Avoid repeated freezing and thawing.

For in vitro investigational use only. Not for use in therapeutic or diagnostic procedures.