

Ankyrin-B Monoclonal Antibody

ORDERING INFORMATION

Catalog No.: 56538 (clone S105-17)
Size: 100ug in PBS (1mg/ml), pH 7.4,
50% glycerol, 0.09% sodium azide.
Purified by Protein G affinity
chromatography.

BACKGROUND

Ankyrins are a family of adaptor proteins that mediate the attachment of integral membrane proteins to the spectrin-actin based membrane skeleton. Ankyrins have binding sites for the beta subunit of spectrin and at least 12 families of integral membrane proteins. This linkage is required to maintain the integrity of the plasma membranes and to anchor specific ion channels, ion exchangers, and ion transporters in the plasma membrane. Ankyrin-B proteins were identified in brain and muscle. Ankyrin-B and Ankyrin-G proteins are required for the polarized distribution of many membrane proteins including the Na⁺/K⁺ ATPase, the voltage gated Na⁺ channel, and the Na⁺/Ca²⁺ exchanger.

SPECIFICATION SUMMARY

Antigen: Fusion protein corresponding to aa 203-496 (ankyrin repeats 6 to 14) of human Ankyrin-B (accession no.Q01484).

Host Species: Mouse

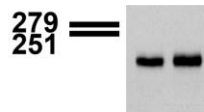
Antibody Class: IgG2a

SPECIFICITY

This antibody recognizes human, mouse, and rat Ankyrin-B. It does not cross-react with Ankyrin-G.

APPLICATIONS

Immunoblotting: use at 1ug/ml. Predicted molecular weight is >200kDa.



Immunoblot on mouse and rat brain lysates with #56538 at 1ug/ml.

Positive Control: rat brain lysate.

These are recommended concentrations. Endusers should determine optimal concentrations for their applications.

DILUTION INSTRUCTIONS

Dilute in PBS or medium which is identical to that used in the assay system.

STORAGE AND STABILITY

This antibody is stable for at least one (1) year at -20°C. Avoid repeated freeze-thaw cycles.

For in vitro investigational use only. Not intended for diagnostic or therapeutic applications.