

GIT1 Monoclonal Antibody

ORDERING INFORMATION

Catalog No.: 56537 (clone S39B-8)
Size: 100ug in PBS (1mg/ml), pH 7.4,
50% glycerol, 0.09% sodium azide.
Purified by Protein G affinity
chromatography.

BACKGROUND

G-protein coupled receptor (GPCR) kinase interacting proteins 1 and 2 (GIT1 and GIT2) are highly conserved ubiquitous scaffold proteins involved in localized signaling to help regulate focal contact assembly and cytoskeletal dynamics. GIT proteins contain multiple interaction domains for small GTPases, kinases, the Rho family GEF PIX, and the focal adhesion protein paxillin. GIT1 is localized to focal adhesions, cytoplasmic complexes and membrane protrusions, and it regulates cell protrusion formation and cell migration.

SPECIFICATION SUMMARY

Antigen: Fusion protein corresponding to aa 375-770 (C-terminus) of rat GIT1 (accession no.Q9Z272).

Host Species: Mouse

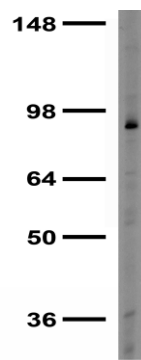
Antibody Class: IgG1

SPECIFICITY

This antibody recognizes human, mouse and rat GIT1. It does not cross-react with GIT2.

APPLICATIONS

Immunoblotting: use at 1ug/ml. Predicted molecular weight is ~90kDa.



Immunoblot on rat brain lysate with #56537 at 1ug/ml.

Positive Control: rat brain lysate.

These are recommended concentrations. Endusers should determine optimal concentrations for their applications.

DILUTION INSTRUCTIONS

Dilute in PBS or medium which is identical to that used in the assay system.

STORAGE AND STABILITY

This antibody is stable for at least one (1) year at -20°C. Avoid repeated freeze-thaw cycles.

For in vitro investigational use only. Not intended for diagnostic or therapeutic applications.