

## Synaptotagmin-7 Monoclonal Antibody

### ORDERING INFORMATION

**Catalog No.:** 56533 (clone S275-14)

**Size:** 100ug in PBS (1mg/ml), pH 7.4, 50% glycerol, 0.09% sodium azide.

Purified by Protein G affinity chromatography.

### BACKGROUND

Synaptotagmins constitute a family of membrane trafficking proteins that are characterized by an N terminal trans-membrane region (TMR), a variable linker, and two C-terminal C2 domains: C2A and C2B. There are 15 members in the mammalian synaptotagmin family. The synaptotagmins are integral membrane proteins of synaptic vesicles thought to act as  $Ca^{+2}$  sensors in vesicular trafficking and exocytosis. Calcium binding to synaptotagmin triggers neurotransmitter release at the synapse. The first C2 domain mediates  $Ca^{+2}$ -dependent phospholipid binding. The second C2 domain mediates interaction with Stoinin 2.

### SPECIFICATION SUMMARY

**Antigen:** Fusion protein corresponding to aa 150-239 of mouse Synaptotagmin-7 (accession no.Q9R0N7).

**Host Species:** Mouse

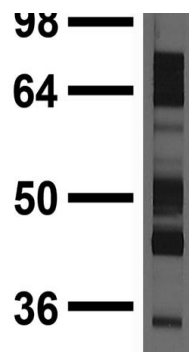
**Antibody Class:** IgG2b

### SPECIFICITY

This antibody recognizes mouse and rat Synaptotagmin-7. It does not cross-react with other Synaptotagmins.

### APPLICATIONS

**Immunoblotting:** use at 1ug/ml. Predicted molecular weight is ~45kDa. Other isoforms of ~65kDa are also detected.



Immunoblot on rat brain lysate with #56533 at 1ug/ml.

**Positive Control:** rat brain lysate.

These are recommended concentrations. Endusers should determine optimal concentrations for their applications.

### DILUTION INSTRUCTIONS

Dilute in PBS or medium which is identical to that used in the assay system.

### STORAGE AND STABILITY

This antibody is stable for at least one (1) year at  $-20^{\circ}C$ . Avoid repeated freeze-thaw cycles.

*For in vitro investigational use only. Not intended for diagnostic or therapeutic applications.*