

## Synaptotagmin-6 Monoclonal Antibody

### ORDERING INFORMATION

**Catalog No.:** 56532 (clone S270-47)

**Size:** 100ug in PBS (1mg/ml), pH 7.4, 50% glycerol, 0.09% sodium azide.

Purified by Protein G affinity chromatography.

### BACKGROUND

Synaptotagmins constitute a family of membrane trafficking proteins that are characterized by an N terminal trans-membrane region (TMR), a variable linker, and two C-terminal C2 domains: C2A and C2B. There are 15 members in the mammalian synaptotagmin family. The synaptotagmins are integral membrane proteins of synaptic vesicles thought to act as  $Ca^{+2}$  sensors in vesicular trafficking and exocytosis. Calcium binding to synaptotagmin triggers neurotransmitter release at the synapse. The first C2 domain mediates  $Ca^{+2}$ -dependent phospholipid binding. The second C2 domain mediates interaction with Stonin 2. Synaptotagmin-6 is localized to the endoplasmic reticulum and/or Golgi-like perinuclear compartment. It is also present in the acrosomal region of mammalian spermatozoa.

### SPECIFICATION SUMMARY

**Antigen:** Fusion protein corresponding to aa 246-333 of mouse Synaptotagmin-6 (accession no.Q9R0N8).

**Host Species:** Mouse

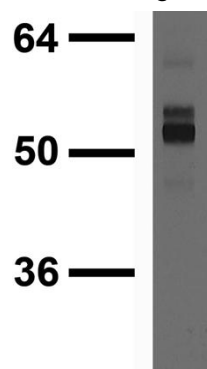
**Antibody Class:** IgG1

### SPECIFICITY

This antibody recognizes human, mouse and rat Synaptotagmin-6. It does not cross-react with other Synaptotagmins.

### APPLICATIONS

**Immunoblotting:** use at 1ug/ml. Predicted molecular weight is ~55kDa.



Immunoblot on rat brain lysate with #56532 at 1ug/ml.

**Positive Control:** rat brain lysate.

These are recommended concentrations. Endusers should determine optimal concentrations for their applications.

### DILUTION INSTRUCTIONS

Dilute in PBS or medium which is identical to that used in the assay system.

### STORAGE AND STABILITY

This antibody is stable for at least one (1) year at  $-20^{\circ}C$ . Avoid repeated freeze-thaw cycles.

*For in vitro investigational use only. Not intended for diagnostic or therapeutic applications.*