

mGluR1/5 Glutamate Receptor Monoclonal Antibody

ORDERING INFORMATION

Catalog No.: 56526 (clone S75-33)
Size: 100ug in PBS (1mg/ml), pH 7.4,
50% glycerol, 0.09% sodium azide.
Purified by Protein G affinity
chromatography.

BACKGROUND

The metabotropic glutamate receptors (mGluRs) are glutamate receptors that are active through an indirect metabotropic process. They are members of the group C family of G-protein-coupled receptors (GPCRs). The mGluRs perform a variety of functions in the central and peripheral nervous systems. They are found in pre- and postsynaptic neurons in synapses of the hippocampus, cerebellum, and the cerebral cortex, as well as other parts of the brain and in peripheral tissues. Unlike ionotropic receptors, metabotropic glutamate receptors are not ion channels. Instead, they activate biochemical cascades, leading to the modification of other proteins.

SPECIFICATION SUMMARY

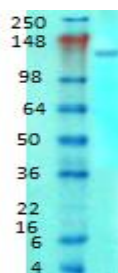
Antigen: Fusion protein corresponding to aa 824-1203 (cytoplasmic C-terminus) of rat mGluR5b (accession no. NP_058708.1).
Host Species: Mouse
Antibody Class: IgG1

SPECIFICITY

This antibody recognizes human, mouse, and rat mGluR1/5.

APPLICATIONS

Immunoblotting: use at 1-2ug/ml. A band of ~130kDa is detected.



Immunoblot on rat brain membranes.

Immunohistochemistry: use at 1-5ug/ml. These are recommended concentrations. Enduser should determine optimal concentrations for their applications.
Positive control: Rat brain membranes.

DILUTION INSTRUCTIONS

Dilute in PBS or medium which is identical to that used in the assay system.

STORAGE AND STABILITY

This product is stable for at least 1 year at -20°C. Freeze in multiple aliquots to avoid repeated freeze-thaw cycles.

For in vitro investigational use only. Not for use in therapeutic or diagnostic procedures.