

## GABA(B)R2 Monoclonal Antibody

### ORDERING INFORMATION

**Catalog No.:** 56523 (clone S81-2)  
**Size:** 100ug in PBS (1mg/ml), pH 7.4,  
50% glycerol, 0.09% sodium azide.  
Purified by Protein G affinity  
chromatography.

### BACKGROUND

GABA ( $\gamma$ -aminobutyric acid) is the primary inhibitory neurotransmitter in the central nervous system and interacts with three different receptors: GABA(A), GABA(B), and GABA(C). GABA(B) receptor is coupled to G proteins that modulate slow inhibitory synaptic transmission. Functional GABA(B) receptors form heterodimers of GABA(B)R1 and GABA(B)R2 in which GABA(B)R1 binds a ligand and GABA(B)R2 is the primary G protein contact site.

### SPECIFICATION SUMMARY

**Antigen:** Fusion protein corresponding to aa 861-912 of rat GABA(B)R2 (accession no. NP\_113990.1).

**Host Species:** Mouse

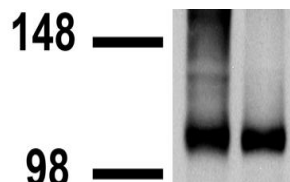
**Antibody Class:** IgG1

### SPECIFICITY

This antibody recognizes human, mouse, and rat GABA(B)R2. It does not cross-react with GABA(B)R1.

### APPLICATIONS

*Immunoblotting:* use at 1-2ug/ml. A band of ~105kDa is detected.



Immunoblot on mouse (left) and rat (right) brain membranes.

*Immunohistochemistry:* use at 1-5ug/ml. These are recommended concentrations. Enduser should determine optimal concentrations for their applications.

*Positive control:* Rat brain membranes.

### DILUTION INSTRUCTIONS

Dilute in PBS or medium which is identical to that used in the assay system.

### STORAGE AND STABILITY

This product is stable for at least 1 year at -20°C. Freeze in multiple aliquots to avoid repeated freeze-thaw cycles.

*For in vitro investigational use only. Not for use in therapeutic or diagnostic procedures.*