

VGlut2 Transporter Monoclonal Antibody

ORDERING INFORMATION

Catalog No.: 56515 (clone S29-29)
Size: 100ug in PBS (1mg/ml), pH 7.4,
50% glycerol, 0.09% sodium azide.
Purified by Protein G affinity
chromatography.

BACKGROUND

The ATP-dependent, chloride-sensitive vesicular glutamate transporters include VGlut1, VGlut2, and VGlut3. VGlut1 and VGlut2 are expressed in brain in a complementary fashion. VGlut1 is expressed in the telencephalic regions whereas VGlut2 is expressed in the lower brainstem and diencephalic regions. VGlut3 is expressed in a small number of neurons in the striatum, hippocampus, cerebral cortex, and raphe nuclei. Pancreatic α and β cells express VGlut1 and VGlut2 in response to glucose concentrations.

SPECIFICATION SUMMARY

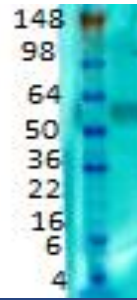
Antigen: Fusion protein corresponding to aa 501-582 (cytoplasmic C-terminus) of rat VGlut2 (accession no. NP_445879).
Host Species: Mouse
Antibody Class: IgG1

SPECIFICITY

This antibody recognizes human, mouse, and rat VGlut2.

APPLICATIONS

Immunoblotting: use at 1-2ug/ml. A band of ~60kDa is detected.



Adult rat brain immunoblot

Immunohistochemistry: use at 1-5ug/ml. These are recommended concentrations. Enduser should determine optimal concentrations for their applications.

Positive control: rat brain lysate.

DILUTION INSTRUCTIONS

Dilute in PBS or medium which is identical to that used in the assay system.

STORAGE AND STABILITY

This product is stable for at least 1 year at -20°C. Freeze in multiple aliquots to avoid repeated freeze-thaw cycles.

For in vitro investigational use only. Not for use in therapeutic or diagnostic procedures.