

## VACHT Transporter Monoclonal Antibody

### ORDERING INFORMATION

**Catalog No.:** 56513 (clone S6-38)  
**Size:** 100ug in PBS (1mg/ml), pH 7.4,  
50% glycerol, 0.09% sodium azide.  
Purified by Protein G affinity  
chromatography.

### BACKGROUND

VACHT is a member of the vesicular amine transporter (VMAT) family. The encoded transmembrane protein transports acetylcholine into secretory vesicles for release into the extracellular space. Acetylcholine transport utilizes a proton gradient established by a vacuolar ATPase. This gene is located within the first intron of the choline acetyltransferase gene.

### SPECIFICATION SUMMARY

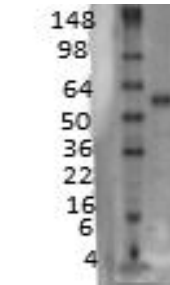
**Antigen:** Synthetic peptide corresponding to aa 521-532 (CEDDYNYYYTRS) of human VACHT (accession no. NP\_003046)  
**Host Species:** Mouse  
**Antibody Class:** IgG1

### SPECIFICITY

This antibody recognizes human, mouse, and rat VACHT.

### APPLICATIONS

*Immunoblotting:* use at 1-10ug/ml. A band of 55kDa is detected. The molecular weight of glycosylated VACHT is 70kDa.



Western blot analysis of VACHT on rat brain membrane with #56513 at 1ug/ml.

*Immunohistochemistry:* use at 1-10ug/ml. These are recommended concentrations. Enduser should determine optimal concentrations for their applications.  
*Positive control:* rat brain

### DILUTION INSTRUCTIONS

Dilute in PBS or medium which is identical to that used in the assay system.

### STORAGE AND STABILITY

This product is stable for at least 1 year at -20°C. Freeze in multiple aliquots to avoid repeated freeze-thaw cycles.

*For in vitro investigational use only. Not for use in therapeutic or diagnostic procedures.*