

Toll-like Receptor 2 (TLR2) Polyclonal Antibody

ORDERING INFORMATION

Catalog No.: 56511

Size: 50ug purified by ion exchange chromatography in PBS containing 0.02% sodium azide. Concentration is 1mg/ml.

BACKGROUND

TLR2 is a 784 aa protein with 19 N-terminal leucine-rich repeat motifs (LRRs) and a molecular weight of 84 kDa. TLR2 is most closely related to TLR6 with 31% overall aa sequence. *In vivo*, two different sized transcripts for TLR2 are observed suggesting that the mRNA is alternatively spliced. TLR2 mRNA expression is observed in brain, heart, lung, and spleen tissues and is highest in PBLs, specifically those of myelomonocytic origin. Recent evidence indicates that TLR2 is recruited to phagosomes and may be directly involved in the internalization of microbial products by cells.

SPECIFICATION SUMMARY

Antigen: Synthetic peptide corresponding to 14 amino acids near the amino terminus of human TLR2 conjugated to KLH.

Host Species: Rabbit

Antibody Class: Polyclonal

Preservatives: 0.02% sodium azide

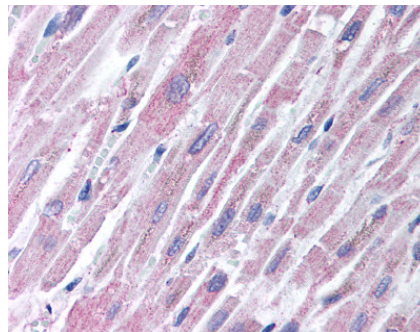
SPECIFICITY

This antibody recognizes human and mouse TLR2.

APPLICATIONS

Western blotting: use at 0.5-2ug/ml. A band of approximately 84 kDa is detected.

Immunohistochemistry: formalin-fixed, paraffin-embedded tissues after heat-induced antigen retrieval in pH 6.0 citrate buffer. Use at 2-5ug/ml.



Heart muscle (FFPE) stained with #56511

These are recommended concentrations. User should determine optimal concentrations for their applications.

DILUTION INSTRUCTIONS

Dilute in PBS or medium which is identical to that used in the assay system.

STORAGE AND STABILITY

Store antibody at 4°C. Dilute prior to immediate use. Avoid freezing.

For in vitro investigational use only. Not for use in therapeutic or diagnostic procedures.