

Toll-like Receptor 8 (TLR8) Polyclonal Antibody

ORDERING INFORMATION

Catalog No.: 56508

Size: 50ug purified by antigen affinity chromatography in PBS containing 0.01% sodium azide. Concentration is 1mg/ml.

BACKGROUND

TLR8 is a 1,041 aa protein containing 26 N-terminal leucine-rich repeat motifs (LRRs) with a molecular weight of 120 kDa. TLR8 is most closely related to TLR7 and TLR9 with 43% and 35% overall aa sequence identity, respectively. *In vivo*, TLR8 mRNA is expressed in lung, placenta, spleen, lymph node, bone marrow, and PBLs, with highest expression found in monocytes. TLR8 may also be localized intracellularly and, like TLR7, binds imidazoquinolines while the natural ligands are still unknown.

SPECIFICATION SUMMARY

Antigen: Synthetic peptide corresponding to an internal region of human TLR8.

Host Species: Rabbit

Antibody Class: Polyclonal

Preservatives: 0.01% sodium azide

SPECIFICITY

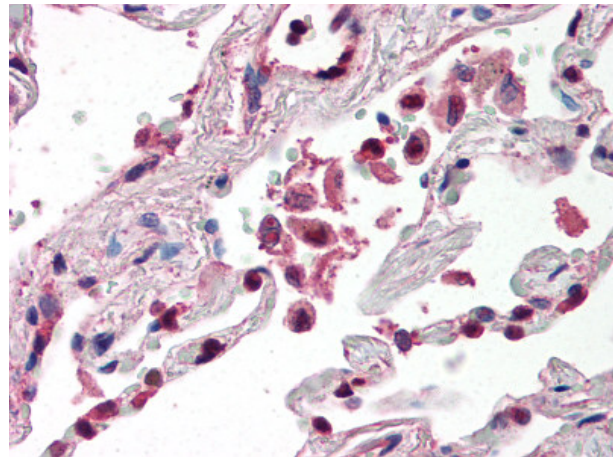
This antibody recognizes human and mouse TLR8.

APPLICATIONS

Western blotting: use at 1:500-1:2,000. A band of approximately 120 kDa is detected.

ELISA: use at 1:2,000-1:10,000.

Immunohistochemistry: formalin-fixed, paraffin-embedded tissues, use at 5ug/ml.



Lung, alveolar macrophages: Formalin-fixed paraffin-embedded

DILUTION INSTRUCTIONS

Dilute in PBS or medium which is identical to that used in the assay system.

STORAGE AND STABILITY

Store at 4°C (short-term) or -70°C (long-term).

For in vitro investigational use only. Not for use in therapeutic or diagnostic procedures.