

Toll-like Receptor 6 (TLR6) Polyclonal Antibody

ORDERING INFORMATION

Catalog No.: 56506

Size: 50ug purified by antigen affinity chromatography in PBS containing 0.02% sodium azide.

BACKGROUND

TLR6 is a 796 aa protein containing 20 N-terminal leucine-rich repeat motifs (LRRs) with a molecular weight of 91 kDa. TLR6 is most closely related to TLR1, TLR10, and TLR2 with 68%, 46%, and 31% overall aa sequence identity, respectively. *In vivo*, TLR6 transcript is observed in thymus, spleen, and lung. TLR6 mRNA expression is highest in B cells and monocytes. TLR6 forms a heterodimer with TLR2. Like TLR1, TLR6 is thought to specify or enhance TLR2 and contribute to its signaling capabilities through heterodimerization.

SPECIFICATION SUMMARY

Antigen: Synthetic peptide corresponding to 13 amino acids near the center of human TLR6.

Host Species: Rabbit

Antibody Class: Polyclonal

Preservatives: 0.02% sodium azide

SPECIFICITY

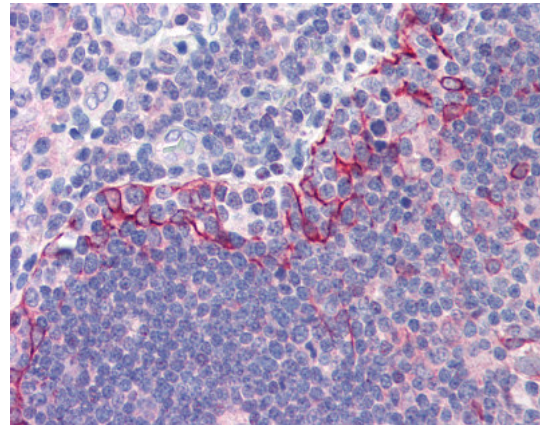
This antibody recognizes human TLR6.

For in vitro investigational use only. Not for use in therapeutic or diagnostic procedures.

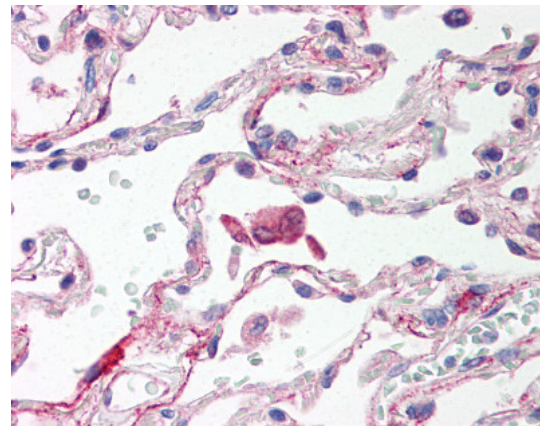
APPLICATIONS

Western blotting: use at 0.5-1ug/ml. A band of approximately 91 kDa is detected.

Immunohistochemistry: formalin-fixed, paraffin-embedded tissues, use at 5ug/ml.



Thymus: Formalin-fixed paraffin-embedded



Lung alveolar macrophages: Formalin-fixed paraffin-embedded.

DILUTION INSTRUCTIONS

Dilute in PBS or medium which is identical to that used in the assay system.

STORAGE AND STABILITY

Store at 4°C (short-term) or -70°C (long-term).