

Toll-like Receptor 3 (TLR3) Polyclonal Antibody

ORDERING INFORMATION

Catalog No.: 56503

Size: 50 ug purified by antigen affinity chromatography in PBS containing 0.02% sodium azide.

BACKGROUND

TLR3 is a 904 aa protein with 24 N-terminal leucine-rich repeat motifs (LRRs) and a molecular weight of 97 kDa. TLR3 is most closely related to TLR5, TLR7, and TLR8, each with 26% overall sequence identity. *In vivo*, two different sized transcripts for TLR3 are observed suggesting that the mRNA is alternatively spliced to generate two different forms of the protein. TLR3 mRNA is expressed at highest levels in placenta and pancreas. There are conflicting reports regarding the expression of TLR3 in particular leukocyte populations. Some suggest that TLR3 is only expressed by dendritic cells (DCs), while others find that TLR3 is expressed by T or NK cells. While it is generally assumed that TLRs are expressed on the cell surface, it now appears that some, such as TLR3, may be localized intracellularly, perhaps in the lysosomal compartment.

SPECIFICATION SUMMARY

Antigen: Synthetic peptide corresponding to 15 amino acids near the N-terminus of human TLR3.

Host Species: Rabbit

Antibody Class: Polyclonal

Preservatives: 0.02% sodium azide

For in vitro investigational use only. Not for use in therapeutic or diagnostic procedures.

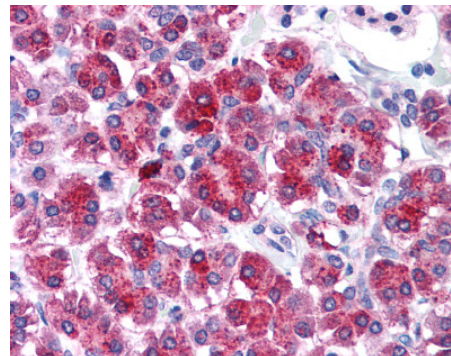
SPECIFICITY

This antibody recognizes human and mouse TLR3.

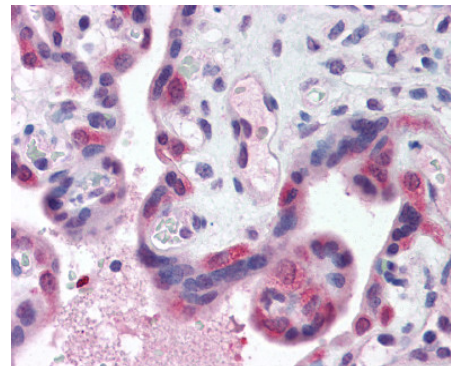
APPLICATIONS

Western blotting: use at 1-2ug/ml. A band of approximately 97 kDa is detected.

Immunohistochemistry: formalin-fixed, paraffin-embedded tissues, use at 5ug/ml.



Pancreas: Formalin-fixed paraffin-embedded



Placenta: Formalin-fixed paraffin-embedded

DILUTION INSTRUCTIONS

Dilute in PBS or medium which is identical to that used in the assay system.

STORAGE AND STABILITY

Store at 4°C. Avoid freezing.