

## Toll-like Receptor 1 (TLR1) Polyclonal Antibody

### **ORDERING INFORMATION**

**Catalog No.:** 56501

**Size:** 50ug purified by ion-exchange chromatography in PBS containing 0.02% sodium azide.

### **BACKGROUND**

TLR1 is a 786 amino acid protein with 18 N-terminal leucine-rich repeat motifs (LRRs) and a calculated molecular weight of 84 kDa. TLR1 is most closely related to TLR6 and TLR10 with 68% and 48% overall sequence identity, respectively. *In vivo*, two different sized transcripts for TLR1 are observed suggesting that the mRNA is alternatively spliced to generate two different forms of the protein. TLR1 mRNA is ubiquitously expressed and found at higher levels than the other TLRs. Of the major leukocyte populations, TLR1 is most highly expressed by monocytes, but is also expressed by macrophages, dendritic cells (DCs), polymorphonuclear leukocytes, B, T, and NK cells.

### **SPECIFICATION SUMMARY**

**Antigen:** Synthetic peptide corresponding to 16 amino acids near the amino terminus of human TLR1.

**Host Species:** Rabbit

**Antibody Class:** Polyclonal

**Preservatives:** 0.02% sodium azide

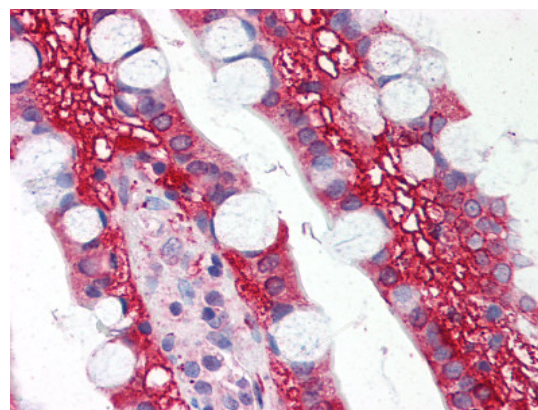
### **SPECIFICITY**

This antibody recognizes human and mouse TLR1.

### **APPLICATIONS**

**Western blotting:** use at 1-2ug/ml. A band of approximately 84 kDa is detected.

**Immunohistochemistry:** formalin-fixed, paraffin-embedded tissues, use at 5ug/ml.



Small intestine: Formalin-fixed paraffin-embedded

### **DILUTION INSTRUCTIONS**

Dilute in PBS or medium which is identical to that used in the assay system.

### **STORAGE AND STABILITY**

This antibody is stable at 4°C (short-term) or -70°C (long-term).

*For in vitro investigational use only. Not for use in therapeutic or diagnostic procedures.*