

Methylated Lysine Polyclonal Antibody

ORDERING INFORMATION

Catalog No.: 56499

Format: 100ug (1mg/ml) Protein A-purified rabbit immunoglobulin in phosphate-buffered saline, pH 7.0 and 50% glycerol.

BACKGROUND

Post-translational modifications of proteins play critical roles in the regulation and function of many biological processes. A common post-transcriptional modification of lysine is methylation. Lysine can be methylated once, twice, or three times by lysine methyltransferases. The transfer of methyl groups from S-adenosyl methionine to histones is catalyzed by enzymes known as histone methyltransferases. Histones that are methylated on certain residues can repress or activate gene expression.

SPECIFICATION SUMMARY

Antigen: Methylated lysine-KLH conjugate.

Host Species: Rabbit

Antibody Class: Polyclonal

Specificity: This antibody recognizes proteins containing methylated lysine residues. It does not recognize non-methylated proteins.

APPLICATIONS

Immunoblotting: use at 0.5-1.0ug/ml.



Western blot analysis of Methylated Lysine in BSA (left) and Methylated BSA (right).

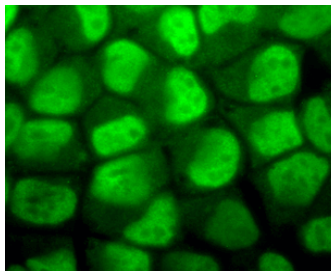
ELISA: use at 1-10ug/ml with methylated lysine-containing proteins on the solid phase.

DILUTION INSTRUCTIONS

Dilute in PBS or medium which is identical to that used in the assay system.

For in vitro investigational use only. Not for use in therapeutic or diagnostic procedures.

Immunofluorescence: use at 20ug/ml.



Detection of methylated lysine in formalin-fixed HeLa cells with #56499 at 20ug/ml for 12 hours at 4°C.

These are recommended concentrations. Enduser should determine optimal concentrations for their applications.

STORAGE AND STABILITY

This product is stable for at least 1 year at -20°C.