

QED Bioscience Inc.

ADVANCED RESEARCH TECHNOLOGIES

Anti-SNAP25 Monoclonal Antibody

ORDERING INFORMATION

Catalog No.: 56480 (clone SP-12)
Size: 100ug in PBS, pH 7.4; 50% glycerol, 0.09% sodium azide. Purified by Protein G affinity chromatography.

BACKGROUND

Synaptosomal-associated protein 25 (SNAP25) is a membrane bound protein anchored to the cytosolic face of membranes via palmitoyl side chains in the middle of the molecule. It is a component of the SNARE complex which is believed to account for the specificity of membrane fusion and for executing fusion by forming a tight complex that brings the synaptic vesicle and plasma membranes together. Two alternatively spliced isoforms of SNAP25 have been identified; SNAP25A and SNAP25B. These isoforms are differentially expressed in neurons and neuroendocrine cells and differ by 9 amino acids in the central portion of the protein.

SPECIFICATION SUMMARY

Antigen: Crude synaptic preparation from post-mortem human brain.

Host Species: Mouse

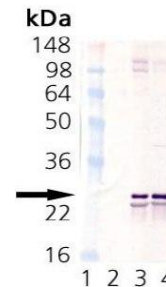
Antibody Class: IgG1

SPECIFICITY

This antibody recognizes human, mouse, rat, feline, and porcine SNAP25.

APPLICATIONS

Immunoblotting: use at 1-10ug/ml. A band of ~29kDa is detected.



1. MW markers
2. Mouse liver
3. Mouse brain
4. Rat brain

ELISA: use at 1-5ug/ml

Immunohistochemistry: use at 1-10ug/ml
These are recommended concentrations. User should determine optimal concentrations for their application.

Positive control: Rat brain lysate.

DILUTION INSTRUCTIONS

Dilute in PBS or medium which is identical to that used in the assay system.

STORAGE AND STABILITY

This antibody is stable for at least one (1) year at -20°C. Avoid repeated freezing and thawing.

For in vitro investigational use only. Not for use in therapeutic or diagnostic procedures.