

VAMP 1,2/Synaptobrevin Monoclonal Antibody

ORDERING INFORMATION

Catalog No.: 56473 (clone SP-11)
Size: 100ug in PBS, pH 7.4; 50% glycerol, 0.09% sodium azide. Purified by Protein G affinity chromatography.

BACKGROUND

VAMP-1 (Vesicle-Associated Membrane Protein) is an 18kDa member of the synaptobrevin family. It is expressed in neurons, neutrophils, and skeletal muscle cells and participates in vesicle fusion with the plasma membrane. Synaptobrevins, syntaxins, SNAP25 are the main components of a protein complex involved in the docking and/or fusion of synaptic vesicles with the presynaptic membrane. VAMP-1 is also one of the key proteins in the SNARE complex involved in regulated exocytosis.

SPECIFICATION SUMMARY

Antigen: Crude human synaptic immunoprecipitate.
Host Species: Mouse
Antibody Class: IgG1

SPECIFICITY

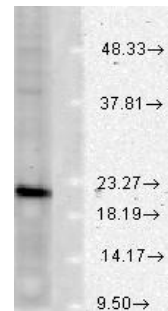
This antibody recognizes human VAMP1 and VAMP2.

PRODUCT REFERENCE

Marshak S et al. 2012. PLoS One 7: e33153. Used #56473 in immunofluorescence at 1ug/ml.

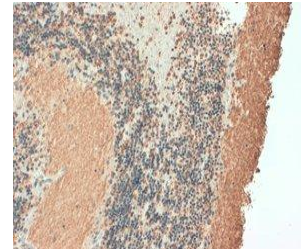
APPLICATIONS

Immunoblotting: use at 0.5-1.0ug/ml. A band of ~18kDa is detected.



Western blot analysis of VAMP1/2 in rat brain with #56473 at 1ug/ml

Immunohistochemistry: use at 1-5ug/ml.



Staining of human brain cerebellum neurons and fibres with #56473

These are recommended concentrations. User should determine optimal concentrations for their application.
Positive control: Human brain lysate

DILUTION INSTRUCTIONS

Dilute in PBS or medium which is identical to that used in the assay system.

STORAGE AND STABILITY

This antibody is stable for at least one (1) year at -20°C. Avoid repeated freezing and thawing.

For in vitro investigational use only. Not for use in diagnostic or therapeutic procedures.