

Anti-Synaptophysin Monoclonal Antibody

ORDERING INFORMATION

Catalog No.: 56471 (clone EP10)
Size: 100ug in PBS, pH 7.4; 50% glycerol, 0.09% sodium azide. Purified by Protein G affinity chromatography.

BACKGROUND

Synaptophysin is a synaptic vesicle glycoprotein with four transmembrane domains. It is present in neuroendocrine cells and is a specific presynaptic marker for all neurons, neuroendocrine cells, and neoplasms of neuroendocrine origin. Synaptophysin plays a role in synaptic vesicle exocytosis including cholesterol-dependent vesicle biogenesis, regulation of SNARE assembly via interaction with VAMP/synaptobrevin, formation of the fusion pore initiating neurotransmitter release, and activation of vesicle endocytosis. The gene for synaptophysin has been implicated in X-linked mental retardation.

SPECIFICATION SUMMARY

Antigen: Immunoprecipitate of human brain.

Host Species: Mouse

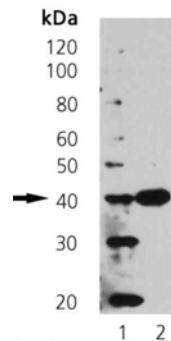
Antibody Class: IgG1

SPECIFICITY

This antibody recognizes human synaptophysin.

APPLICATIONS

Immunoblotting: use at 1-10ug/ml. A band of ~38kDa is detected.



1: MW markers; 2: Human brain extract (10ug)

Positive control: Human brain lysate.

DILUTION INSTRUCTIONS

Dilute in PBS or medium which is identical to that used in the assay system.

STORAGE AND STABILITY

This antibody is stable for at least one (1) year at -20°C. Avoid repeated freezing and thawing.

For in vitro investigational use only. Not for use in therapeutic or diagnostic procedures.