

Anti-Beta 1 GABA-A Receptor Monoclonal Antibody

ORDERING INFORMATION

Catalog No.: 56465 (clone S96-55)
Size: 100ug in PBS, pH 7.4; 50% glycerol, 0.09% sodium azide. Purified by Protein G affinity chromatography.

BACKGROUND

GABA is the major inhibitory neurotransmitter in the vertebrate brain. GABA receptors consist of five subunits that form a chloride ion channel. Subunit families α , β , γ , and δ have been studied extensively; π and ϵ have been identified recently. Studies of recombinant GABA receptors have shown that individual subunits and their subtypes confer different sensitivities to GABA receptor modulators. Subunit subtypes are differentially expressed throughout development and in different CNS regions, reducing the total number of possible isoforms that can be formed in different brain regions and in individual cells.

SPECIFICATION SUMMARY

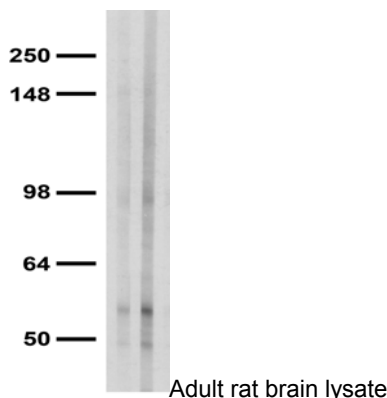
Antigen: Fusion protein, aa 327-450 of mouse Beta 1 GABA-A receptor (accession no. P50571).
Host Species: Mouse
Antibody Class: IgG1

SPECIFICITY

This antibody recognizes human, mouse, and rat Beta 1 GABA-A receptor. It does not cross-react with Beta 2 or Beta 3 GABA-A receptors.

APPLICATIONS

Immunoblotting: use at 1-10ug/ml. A band of ~55kDa is detected.



Immunohistochemistry and Immunocytochemistry: use at 0.1-1ug/ml
Immunofluorescence: use at 1-10ug/ml
These are recommended concentrations. User should determine optimal concentrations for their application.
Positive control: Rat brain lysate.

DILUTION INSTRUCTIONS

Dilute in PBS or medium which is identical to that used in the assay system.

STORAGE AND STABILITY

This antibody is stable for at least one (1) year at -20°C. Avoid repeated freezing and thawing.

For in vitro investigational use only. Not for use in therapeutic or diagnostic procedures.