

## Anti-pan-SAPAP Monoclonal Antibody

### ORDERING INFORMATION

Catalog No.: 56464 (clone S127-31)  
Size: 100ug in PBS, pH 7.4; 50% glycerol, 0.09% sodium azide. Purified by Protein G affinity chromatography.

### BACKGROUND

The SAPAP protein family has at least four members and undergoes complex alternative splicing. They are thought to be adaptor proteins that interact with different synaptic scaffolding proteins, cytoskeletal, and signaling components. SAPAP interacts with GK domains of PSD-95 and also binds Shank at the C-terminal region. SAPAPs appear to be important in recruiting and clustering of NMDA receptors and MAGUK (Membrane-Associated Guanylate Kinase)-based signaling complexes.

### SPECIFICATION SUMMARY

**Antigen:** Fusion protein, aa 772-992 (C-terminus) of rat SAPAP1 (accession no. P97836).

**Host Species:** Mouse

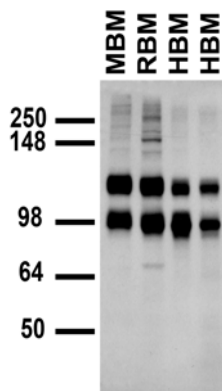
**Antibody Class:** IgG2b

### SPECIFICITY

This antibody recognizes human, mouse and rat SAPAP 1, 2, 3, and 4.

### APPLICATIONS

**Immunoblotting:** use at 1-10ug/ml. Bands of ~120kDa (SAPAP2) and ~110kDa (SAPAP1/3/4) are detected.



MBM=mouse brain, RBM=rat brain, 1<sup>st</sup> HBM=human hippocampus, 2<sup>nd</sup> HBM=human cerebral cortex.

**Immunohistochemistry and**

**Immunocytochemistry:** use at 0.1-1ug/ml

**Immunofluorescence:** use at 1-10ug/ml

These are recommended concentrations.

User should determine optimal

concentrations for their application.

**Positive control:** Rat brain lysate.

### DILUTION INSTRUCTIONS

Dilute in PBS or medium which is identical to that used in the assay system.

### STORAGE AND STABILITY

This antibody is stable for at least one (1) year at -20°C. Avoid repeated freezing and thawing.

*For in vitro investigational use only. Not for use in therapeutic or diagnostic procedures.*