

Anti-Thorase (Atad1) Monoclonal Antibody

ORDERING INFORMATION

Catalog No.: 56460 (clone S125-10)
Size: 100ug in PBS, pH 7.4; 50% glycerol, 0.09% sodium azide. Purified by Protein G affinity chromatography.

BACKGROUND

The AAA+ (ATPases Associated with a wide variety of cellular Activities) superfamily represents an ancient group of ATPases belonging to the ASCE (for additional strand, catalytic E) division of the P-loop NTPase fold. Members of the AAA+ ATPases function as molecular chaperons, ATPase subunits of proteases, helicases, or nucleic-acid stimulated ATPases. One member of this superfamily is thorase, also known as ATPase family AAA domain-containing protein 1 or Atad1.

SPECIFICATION SUMMARY

Antigen: Fusion protein, aa 1-361 (full-length) of mouse thorase (accession no. Q9D5T0).

Host Species: Mouse

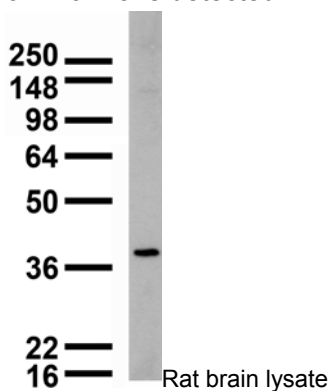
Antibody Class: IgG1

SPECIFICITY

This antibody recognizes human, mouse, and rat thorase.

APPLICATIONS

Immunoblotting: use at 1-10ug/ml. A band of ~40kDa is detected.



Immunohistochemistry and

Immunocytochemistry: use at 0.1-1ug/ml

Immunofluorescence: use at 1-10ug/ml
These are recommended concentrations.

User should determine optimal concentrations for their application.

Positive control: Rat brain lysate.

DILUTION INSTRUCTIONS

Dilute in PBS or medium which is identical to that used in the assay system.

STORAGE AND STABILITY

This antibody is stable for at least one (1) year at -20°C. Avoid repeated freezing and thawing.

For in vitro investigational use only. Not for use in therapeutic or diagnostic procedures.