

Calcineurin A Polyclonal Antibody

ORDERING INFORMATION

Catalog nos.: 56336-50 (50ug) 56336-200 (200ug)

Format: Protein A-purified antibody in PBS, 50% glycerol, 0.09% sodium azide,.

BACKGROUND

Calcineurin is a Ca^{+2} /calmodulin-dependent serine/threonine protein phosphatase. The active enzyme is a heterodimer consisting of a catalytic A subunit and a myristylated regulatory B subunit that binds calcium. It controls the translocation of nuclear factors from the cytosol into the nucleus of activated T cells. Calcineurin is a target of immunosuppressive drugs such as cyclosporin A and FK506.

SPECIFICATION SUMMARY

Antigen: Synthetic peptide corresponding to aa 264-283 of human Calcineurin A conjugated to KLH. This sequence is identical in rat and mouse calcineurin A.

Accession no.: P16298

Gene ID: 5532

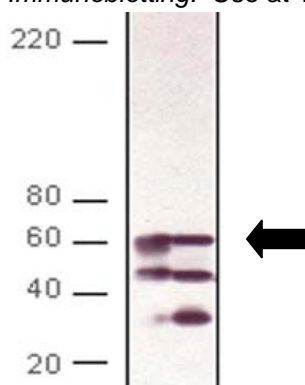
Host Species: Rabbit

Antibody Class: Polyclonal

Specificity: This antibody recognizes human, mouse, rat, rabbit, canine, bovine, porcine, chicken, monkey, hamster, and *Drosophila* Calcineurin A.

APPLICATIONS

Immunoblotting: Use at 1-5ug/ml. A band of ~61kDa is detected.



Detection of Calcineurin A in rat brain lysate (Lane 1) and mouse brain lysate (Lane 2).

These are recommended concentrations. Endusers should determine optimal concentrations for their application.

DILUTION INSTRUCTIONS

Dilute in PBS or medium that is identical to that used in the assay system.

STORAGE AND STABILITY

This antibody is stable for at least one (1) year at $-20^{\circ}C$. Store in appropriate aliquots to avoid multiple freeze/thaw cycles.

For in vitro investigational use only. Not intended for therapeutic or diagnostic procedures.