

## GABA<sub>B</sub> Receptor Associated Protein Subunit 2 Polyclonal Antibody

### ORDERING INFORMATION

**Catalog No.:** 56311

**Size:** 100ug (1mg/ml) affinity-purified antibody in PBS, pH 7.4, 0.02% sodium azide.

### BACKGROUND

The GABA<sub>B</sub> receptor is the first discovered G-protein-coupled receptor whose function requires two subunits, R1 and R2, to form a functional receptor. The R1 subunit extracellular domain binds GABA, and the R2 subunit functions in G-protein activation.

### SPECIFICATION SUMMARY

**Antigen:** Synthetic peptide corresponding to aa 42-54 (TRGAPRPPSSPP) of the rat GABA<sub>B</sub>R2 subunit.

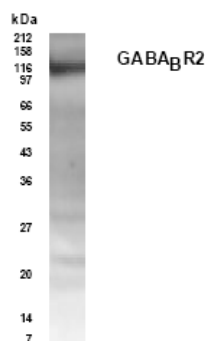
**Host Species:** Rabbit

### SPECIFICITY

This antibody recognizes the human and rat GABA<sub>B</sub>R2 subunit.

### APPLICATIONS

**Immunoblotting:** use at 1:250 – 1:1,000 dilution. A band of ~105kDa is detected.



Western blot analysis of GABA<sub>B</sub>R2 in rat brain lysate with #56311 at a 1:500 dilution.

### DILUTION INSTRUCTIONS

Dilute in PBS or medium which is identical to that used in the assay system.

### STORAGE AND STABILITY

This antibody is stable for at least one (1) year at -20°C. Avoid multiple freeze-thaw cycles.

*For in vitro investigational use only. Not for use in therapeutic or diagnostic procedures.*