

## LAMP1 Monoclonal Antibody

### ORDERING INFORMATION

**Catalog No.:** 56270 (clone Ly1C6)

**Format:** 100ug in PBS, pH 7.4, purified by Protein G affinity chromatography, 0.09% sodium azide, 50% glycerol.

### BACKGROUND

Lysosome-associated membrane proteins (LAMP1 and LAMP2) are major constituents of the lysosomal membrane. The structures of these two proteins are closely related with 37% sequence homology. Both are transmembrane glycoproteins localized primarily in lysosomes and late endosomes. Cell surface LAMP1 and LAMP2 promote adhesion of human peripheral blood mononuclear cells (PBMC) to vascular endothelium which suggests that they are involved in adhesion of PBMC at sites of inflammation.

### SPECIFICATION SUMMARY

**Antigen:** Rat liver lysosome membranes.

**Host Species:** Mouse

**Antibody Class:** IgG1

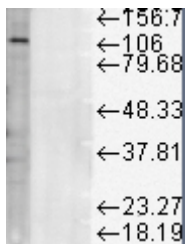
**Specificity:** This antibody recognizes human, rat, and hamster LAMP1.

**Accession no.:** NP\_036989.1 **Gene ID:** 25328

### APPLICATIONS

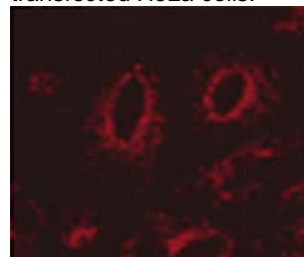
**Immunoblotting:** Use at 1ug/ml. A band of ~120kDa is detected.

LAMP1 detected in rat liver microsomes.



**Immunocytochemistry:** Use at 5-10ug/ml.

Immunofluorescent detection of LAMP 1 in transfected HeLa cells.



These are recommended concentrations. Enduser should determine optimal concentrations for their application.

### DILUTION INSTRUCTIONS

Dilute in PBS or medium which is identical to that used in the assay system.

### STORAGE AND STABILITY

This antibody is stable for at least one (1) year at -20°C. Avoid repeated freezing and thawing.

### REFERENCE

Lewis V et al. 1985. J Cell Biol 100: 1839-1847.

*For in vitro investigational use only. Not for use in therapeutic or diagnostic procedures.*