

HER2 (Phospho-Tyr877) Polyclonal Antibody

ORDERING INFORMATION

Catalog No.: 43075

Format: 100ul at 1.0mg/ml in PBS (without Mg²⁺ and Ca²⁺), pH 7.4, 150mM NaCl, 0.02% sodium azide and 50% glycerol. Affinity-purified on phosphopeptide; non-phosphopeptide-reactive antibodies were removed by chromatography on non-phosphorylated peptide.

BACKGROUND

HER2 is a member of the human epidermal growth factor receptor (HER/EGFR/ERBB) family. Amplification or over-expression of this oncogene has been shown to play an important role in the development and progression of certain aggressive types of breast cancer. In recent years HER2 has become an important biomarker and target of therapy for approximately 30% of breast cancer patients.

SPECIFICATION SUMMARY

Antigen: Peptide sequence that includes phosphorylation site of tyrosine 877 (T-E-Y(p)-H-A) derived from human HER2 and conjugated to KLH.

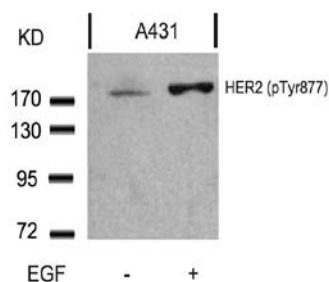
Host Species: Rabbit

Specificity: This antibody detects endogenous human, mouse, and rat HER2 only when phosphorylated at tyrosine 877.

Accession no.: P04626, NP_001005862.1

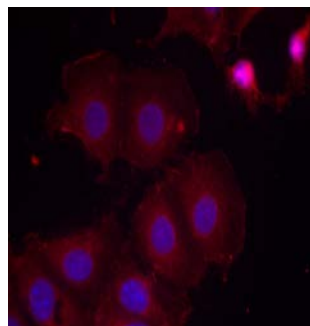
APPLICATIONS

Immunoblotting: use at dilution of 1:500-1:1,000. A band of ~185kDa is detected.



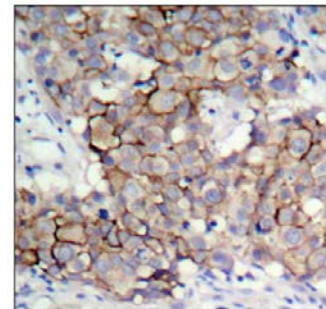
Detection of HER2 (phospho-Tyr877) in extracts of A431 cells untreated or treated with EGF.

Immunofluorescence: use at dilution of 1:100-1:200.



Detection of HER2 (phospho-Tyr877) in methanol-fixed MCF-7 cells.

Immunohistochemistry: use at dilution of 1:50-1:100.



Detection of HER2 (phospho-Tyr877) in paraffin-embedded human breast carcinoma tissue.

These are recommended working dilutions. Enduser should determine optimal dilutions for their applications.

DILUTION INSTRUCTIONS

Dilute in PBS or medium that is identical to that used in the assay system.

HER2 (Phospho-Tyr877) Polyclonal Antibody

STORAGE AND STABILITY

This antibody is stable for at least one (1) year at -20°C. Can be stored at 4°C for short-term.

For in vitro investigational use only. Not intended for therapeutic or diagnostic applications.