

Estrogen Receptor- α (Phospho-Ser106) Polyclonal Antibody

ORDERING INFORMATION

Catalog No.: 43071

Format: 100ul at 1.0mg/ml in PBS (without Mg²⁺ and Ca²⁺), pH 7.4, 150mM NaCl, 0.02% sodium azide and 50% glycerol. Affinity-purified on phosphopeptide; non-phosphopeptide-reactive antibodies were removed by chromatography on non-phosphorylated peptide.

BACKGROUND

Estrogen receptor alpha (ER α), also known as NR3A1 (nuclear receptor subfamily 3, group A, member 1), is one of two main types of estrogen receptor, a nuclear receptor that is activated by estrogen. In humans, ER α is encoded by the gene *ESR1* (Estrogen Receptor 1). Estrogen receptor (ER) is a ligand-activated transcription factor composed of several domains important for hormone binding, DNA binding, and activation of transcription. Alternative splicing results in several *ESR1* mRNA transcripts, which differ primarily in their 5-prime untranslated regions. The translated receptors show less variability.

SPECIFICATION SUMMARY

Antigen: Peptide sequence that includes phosphorylation site of serine 106 (S-P-S(p)-P-L) derived from human estrogen receptor- α and conjugated to KLH.

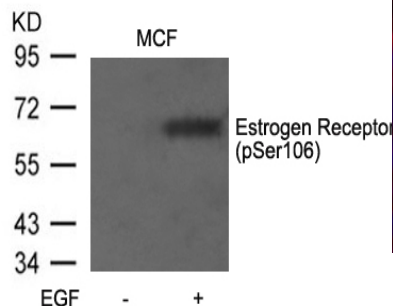
Host Species: Rabbit

Specificity: This antibody detects endogenous human, mouse, and rat estrogen receptor- α only when phosphorylated at serine 106.

Accession no.: P03372, NP_000116.2

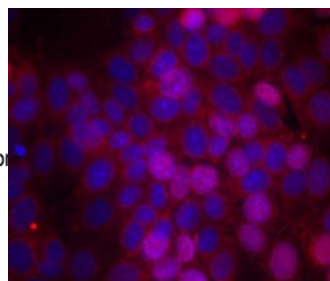
APPLICATIONS

Immunoblotting: use at dilution of 1:500-1:1,000. A band of ~66kDa is detected.



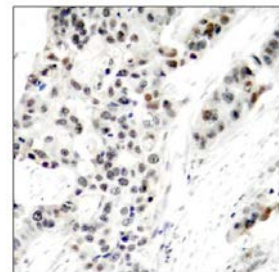
Detection of ER- α (phospho-Ser106) in extracts of MCF-7 cells untreated or treated with EGF.

Immunofluorescence: use at dilution of 1:100-1:200.



Detection of ER- α (phospho-Ser106) in methanol-fixed MCF-7 cells.

Immunohistochemistry: use at dilution of 1:50-1:100.



Detection of ER (phospho-Ser106) in paraffin-embedded human breast carcinoma tissue.

These are recommended working dilutions. Enduser should determine optimal dilutions for their applications.

DILUTION INSTRUCTIONS

Dilute in PBS or medium that is identical to that used in the assay system.

Estrogen Receptor- α (Phospho-Ser106) Polyclonal Antibody

STORAGE AND STABILITY

This antibody is stable for at least one (1) year at -20°C. Can be stored at 4°C for short-term.

For in vitro investigational use only. Not intended for therapeutic or diagnostic applications.