

Bcl-xL (Phospho-Ser62) Polyclonal Antibody

ORDERING INFORMATION

Catalog No.: 43066

Format: 100ul at 1.0mg/ml in PBS (without Mg²⁺ and Ca²⁺), pH 7.4, 150mM NaCl, 0.02% sodium azide and 50% glycerol. Affinity-purified on phosphopeptide; non-phosphopeptide-reactive antibodies were removed by chromatography on non-phosphorylated peptide.

BACKGROUND

B-cell lymphoma-extra large (Bcl-xl, or BCL2-like 1 isoform 1) is a transmembrane protein in the mitochondria. It is a member of the Bcl-2 family of proteins and acts as a pro-survival protein by preventing the release of mitochondrial cytochrome c, which would lead to caspase activation. Relative amounts of pro- and anti-survival Bcl-2 family proteins define whether a cell will undergo cell death: if more Bcl-xL is present, then pores are non-permeable to pro-apoptotic molecules and the cell survives.

SPECIFICATION SUMMARY

Antigen: Peptide sequence that includes phosphorylation site of serine 62 derived from human Bcl-xL and conjugated to KLH.

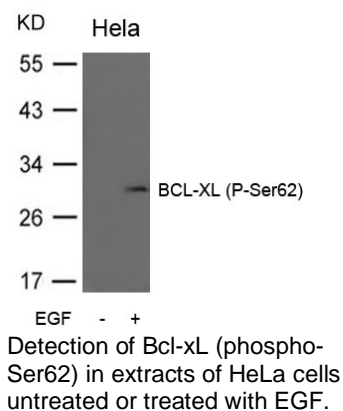
Host Species: Rabbit

Specificity: This antibody detects endogenous human, mouse, and rat Bcl-xL only when phosphorylated at serine 62.

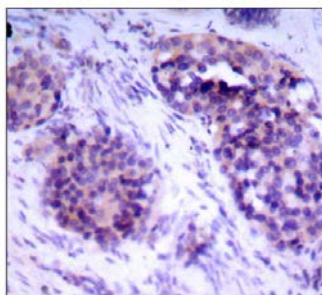
Accession no.: NP_612815.1

APPLICATIONS

Immunoblotting: use at dilution of 1:500-1:1,000. A band of ~30kDa is detected.

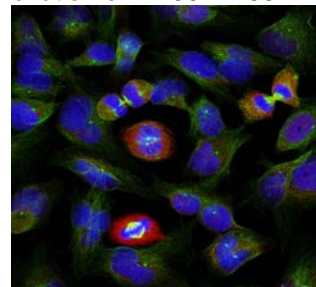


Immunohistochemistry: use at dilution of 1:50-1:100.



Detection of Bcl-xL (phospho-Ser62) in paraffin-embedded human breast carcinoma tissue.

Immunofluorescence: use at dilution of 1:100-1:200.



Detection of Bcl-xL (phospho-Ser62) in methanol-fixed HeLa cells.

These are recommended working dilutions. Enduser should determine optimal dilutions for their application.

DILUTION INSTRUCTIONS

Dilute in PBS or medium that is identical to that used in the assay system.

STORAGE AND STABILITY

This antibody is stable for at least one (1) year at -20°C. Can be stored at 4°C for short-term.
For in vitro investigational use only. Not intended for therapeutic or diagnostic applications.