

STAT3 (Phospho-Ser727) Polyclonal Antibody

ORDERING INFORMATION

Catalog No.: 43046

Format: 100ul at 1.0mg/ml in PBS (without Mg²⁺ and Ca²⁺), pH 7.4, 150mM NaCl, 0.02% sodium azide and 50% glycerol. Affinity-purified on phosphopeptide; non-phosphopeptide-reactive antibodies were removed by chromatography on non-phosphorylated peptide.

BACKGROUND

Signal transducers and activators of transcription (STATs) are transcription factors that play important roles in signaling pathways induced by many different cytokines and growth factors that regulate cell growth and differentiation, the immune response, antiviral activity, and homeostasis. Their activation and mechanisms of action are examples of direct signaling to the nucleus by extracellular polypeptide ligands without the involvement of second messengers, tyrosine phosphorylation of transcription factors, or transcription factors that make direct contact with membrane-bound receptors and DNA. Since the discovery of STAT 1 and 2, the family has been expanded to seven members.

SPECIFICATION SUMMARY

Antigen: Peptide sequence that includes phosphorylation site of serine 727 (P-M-S(p)-P-R) derived from human STAT3 and conjugated to KLH.

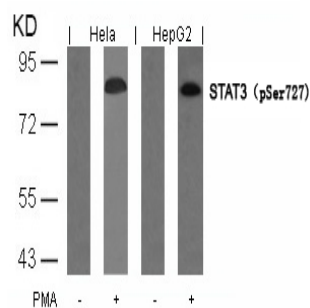
Accession no.: P40763, NP_003141.2

Host Species: Rabbit

Specificity: This antibody detects endogenous human, mouse, and rat STAT3 only when phosphorylated at serine 727.

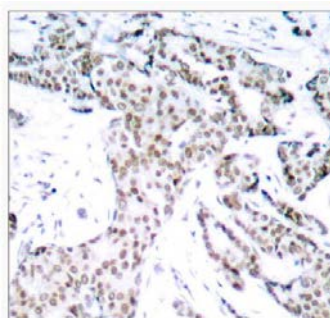
APPLICATION

Immunoblotting: use at dilution of 1:500-1:1,000. A band of ~88kDa is detected.



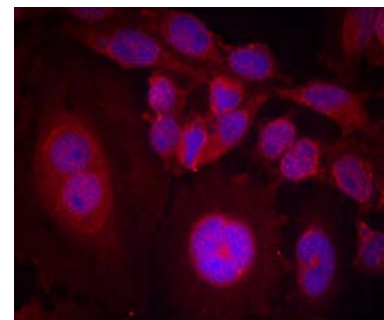
Detection of STAT3 (phospho-Ser727) in extracts of HeLa and HepG2 cells untreated or treated with PMA.

Immunohistochemistry: use at dilution of 1:50-1:100.



Detection of STAT3 (phospho-Ser727) in paraffin-embedded human breast carcinoma tissue.

Immunofluorescence: use at dilution of 1:100-1:200.



Detection of STAT3 (phospho-Ser727) in methanol-fixed HeLa cells.

These are recommended working dilutions. Enduser should determine optimal dilutions for their applications.

STAT3 (Phospho-Ser727) Polyclonal Antibody

DILUTION INSTRUCTIONS

Dilute in PBS or medium that is identical to that used in the assay system.

STORAGE AND STABILITY

This antibody is stable for at least one (1) year at -20°C. Can be stored at 4°C for short-term use.

For in vitro investigational use only. Not intended for therapeutic or diagnostic applications.